

## Product datasheet for **TA812710**

### Complement Component 6 (C6) Mouse Monoclonal Antibody [Clone ID: OTI2G1]

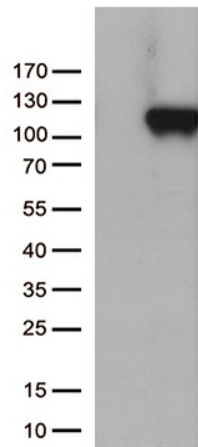
#### Product data:

Product Type:	Primary Antibodies
Clone Name:	OTI2G1
Applications:	WB
Recommended Dilution:	WB 1:250~500
Reactivity:	Human
Host:	Mouse
Isotype:	IgG1
Clonality:	Monoclonal
Immunogen:	Human recombinant protein fragment corresponding to amino acids 176-522 of human C6 (NP_000056) produced in E.coli.
Formulation:	PBS (pH 7.3) containing 1% BSA, 50% glycerol and 0.02% sodium azide.
Concentration:	1 mg/ml
Purification:	Purified from mouse ascites fluids or tissue culture supernatant by affinity chromatography (protein A/G)
Conjugation:	Unconjugated
Storage:	Store at -20°C as received.
Stability:	Stable for 12 months from date of receipt.
Predicted Protein Size:	104.9 kDa
Gene Name:	complement component 6
Database Link:	<a href="#">NP_000056</a> <a href="#">Entrez Gene 729 Human</a> <a href="#">P13671</a>
Background:	Constituent of the membrane attack complex (MAC) that plays a key role in the innate and adaptive immune response by forming pores in the plasma membrane of target cells. [UniProtKB/Swiss-Prot Function]
Protein Families:	Druggable Genome, Secreted Protein
Protein Pathways:	Complement and coagulation cascades, Prion diseases, Systemic lupus erythematosus

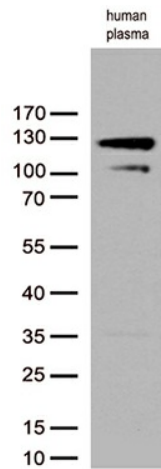


[View online »](#)

## Product images:



HEK293T cells were transfected with the pCMV6-ENTRY control (Left lane) or pCMV6-ENTRY C6 ([RC207784], Right lane) cDNA for 48 hrs and lysed. Equivalent amounts of cell lysates (5 ug per lane) were separated by SDS-PAGE and immunoblotted with anti-C6 (1:500). Positive lysates [LY400016] (100ug) and [LC400016] (20ug) can be purchased separately from OriGene.



Western blot analysis of extracts from human plasma by using anti-C6 monoclonal antibody (1:250).