

## Product datasheet for **TA812682S**

### **DUSP1 Mouse Monoclonal Antibody [Clone ID: OT18A4]**

#### **Product data:**

Product Type:	Primary Antibodies
Clone Name:	OT18A4
Applications:	WB
Recommended Dilution:	WB 1:500
Reactivity:	Human, Mouse, Rat
Host:	Mouse
Isotype:	IgG1
Clonality:	Monoclonal
Immunogen:	Full length human recombinant protein of human DUSP1 (NP_004408) produced in E.coli.
Formulation:	PBS (pH 7.3) containing 1% BSA, 50% glycerol and 0.02% sodium azide.
Concentration:	1 mg/ml
Purification:	Purified from mouse ascites fluids or tissue culture supernatant by affinity chromatography (protein A/G)
Conjugation:	Unconjugated
Storage:	Store at -20°C as received.
Stability:	Stable for 12 months from date of receipt.
Predicted Protein Size:	39.1 kDa
Gene Name:	dual specificity phosphatase 1
Database Link:	<a href="#">NP_004408</a> <a href="#">Entrez Gene 19252 Mouse</a> <a href="#">Entrez Gene 114856 Rat</a> <a href="#">Entrez Gene 1843 Human</a> <a href="#">P28562</a>



[View online »](#)

**Background:**

The expression of DUSP1 gene is induced in human skin fibroblasts by oxidative/heat stress and growth factors. It specifies a protein with structural features similar to members of the non-receptor-type protein-tyrosine phosphatase family, and which has significant amino-acid sequence similarity to a Tyr/Ser-protein phosphatase encoded by the late gene H1 of vaccinia virus. The bacterially expressed and purified DUSP1 protein has intrinsic phosphatase activity, and specifically inactivates mitogen-activated protein (MAP) kinase in vitro by the concomitant dephosphorylation of both its phosphothreonine and phosphotyrosine residues. Furthermore, it suppresses the activation of MAP kinase by oncogenic ras in extracts of *Xenopus* oocytes. Thus, DUSP1 may play an important role in the human cellular response to environmental stress as well as in the negative regulation of cellular proliferation. [provided by RefSeq, Jul 2008]

**Synonyms:**

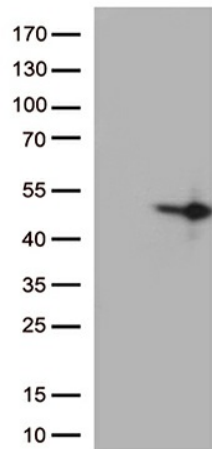
CL100; HVH1; MKP-1; MKP1; PTPN10

**Protein Families:**

Druggable Genome, Phosphatase

**Protein Pathways:**

MAPK signaling pathway

**Product images:**

HEK293T cells were transfected with the pCMV6-ENTRY control (Left lane) or pCMV6-ENTRY DUSP1 ([RC205220], Right lane) cDNA for 48 hrs and lysed. Equivalent amounts of cell lysates (5 ug per lane) were separated by SDS-PAGE and immunoblotted with anti-DUSP1 (1:500). Positive lysates [LY401403] (100ug) and [LC401403] (20ug) can be purchased separately from OriGene.