

## Product datasheet for **TA812677AM**

### Caveolin 1 (CAV1) Mouse Monoclonal Antibody (Biotin conjugated) [Clone ID: OTI2C4]

#### Product data:

Product Type:	Primary Antibodies
Clone Name:	OTI2C4
Applications:	IHC, WB
Recommended Dilution:	WB 1:500, IHC 1:500
Reactivity:	Human, Mouse, Rat
Host:	Mouse
Isotype:	IgG1
Clonality:	Monoclonal
Immunogen:	Human recombinant protein fragment corresponding to amino acids 2-104 of human CAV1 (NP_001744) produced in E.coli.
Formulation:	PBS (pH 7.3) containing 1% BSA, 50% glycerol and 0.02% sodium azide.
Concentration:	0.5 mg/ml
Purification:	Purified from mouse ascites fluids or tissue culture supernatant by affinity chromatography (protein A/G)
Conjugation:	Biotin
Storage:	Store at -20°C as received.
Stability:	Stable for 12 months from date of receipt.
Predicted Protein Size:	20.3 kDa
Gene Name:	caveolin 1
Database Link:	<a href="#">NP_001744</a> <a href="#">Entrez Gene 12389 Mouse</a> <a href="#">Entrez Gene 25404 Rat</a> <a href="#">Entrez Gene 857 Human</a> <a href="#">Q03135</a>



[View online »](#)

**Background:**

The scaffolding protein encoded by this gene is the main component of the caveolae plasma membranes found in most cell types. The protein links integrin subunits to the tyrosine kinase FYN, an initiating step in coupling integrins to the Ras-ERK pathway and promoting cell cycle progression. The gene is a tumor suppressor gene candidate and a negative regulator of the Ras-p42/44 mitogen-activated kinase cascade. Caveolin 1 and caveolin 2 are located next to each other on chromosome 7 and express colocalizing proteins that form a stable hetero-oligomeric complex. Mutations in this gene have been associated with Berardinelli-Seip congenital lipodystrophy. Alternatively spliced transcripts encode alpha and beta isoforms of caveolin 1. [provided by RefSeq, Mar 2010]

**Synonyms:**

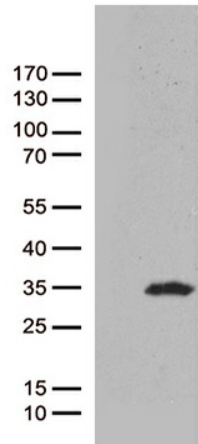
BSCL3; CGL3; LCCNS; MSTP085; PPH3; VIP21

**Protein Families:**

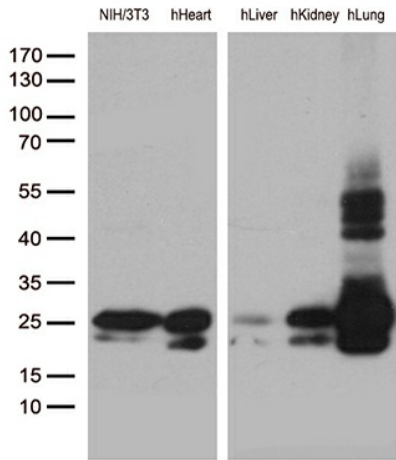
Druggable Genome, Transmembrane

**Protein Pathways:**

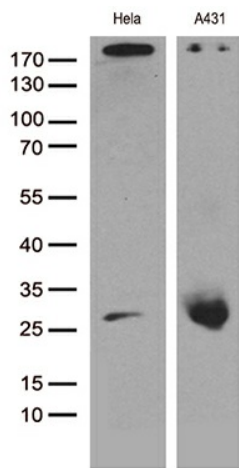
Focal adhesion, Viral myocarditis

**Product images:**

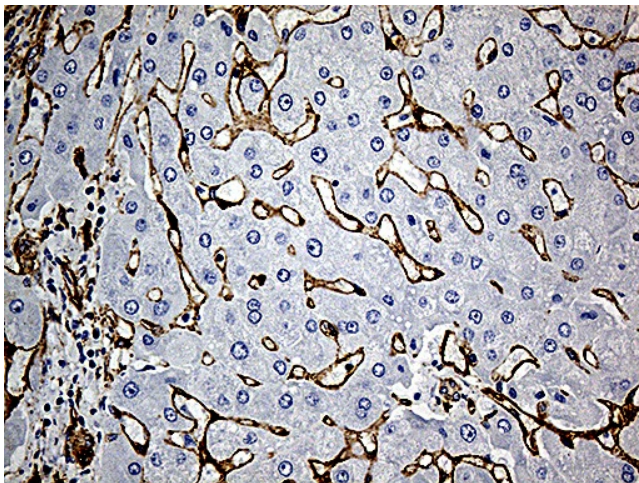
HEK293T cells were transfected with the pCMV6-ENTRY control (Cat# [PS100001], Left lane) or pCMV6-ENTRY CAV1 (Cat# [RC210274], Right lane) cDNA for 48 hrs and lysed. Equivalent amounts of cell lysates (5 ug per lane) were separated by SDS-PAGE and immunoblotted with anti-CAV1 (Cat# [TA812677])(1:500). Positive lysates [LY400664] (100ug) and [LC400664] (20ug) can be purchased separately from OriGene.



Western blot analysis of extracts (35ug) from NIH/3T3 cells and 4 different tissue lysates by using anti-CAV1 monoclonal antibody (1:500).

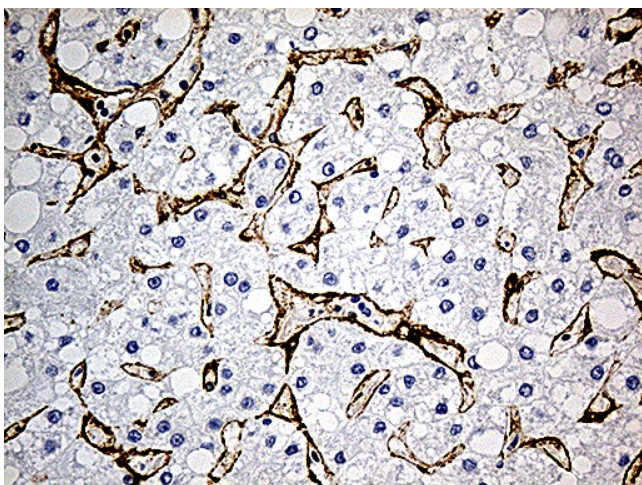


Western blot analysis of extracts (35ug) from different 2 cell lines by using anti-CAV1 monoclonal antibody (1:500).

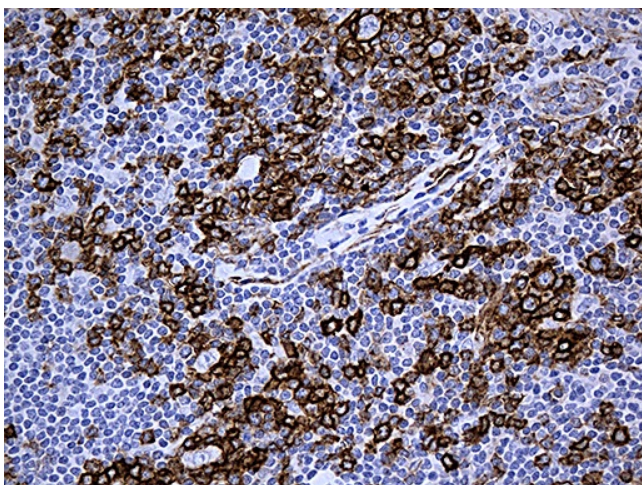


Immunohistochemical staining of paraffin-embedded Human liver tissue within the normal limits using anti-CAV1 mouse monoclonal antibody. (Heat-induced epitope retrieval by 1mM EDTA in 10mM Tris buffer (pH8.5) at 120°C for 3min, [TA812677]) (1:500)

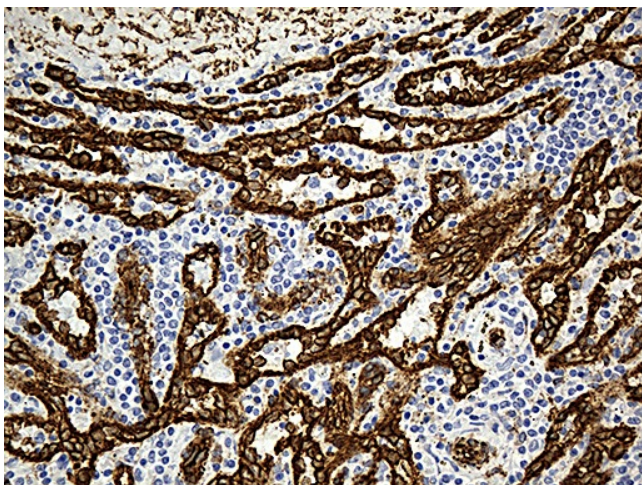




Immunohistochemical staining of paraffin-embedded Carcinoma of Human liver tissue using anti-CAV1 mouse monoclonal antibody. (Heat-induced epitope retrieval by 1mM EDTA in 10mM Tris buffer (pH8.5) at 120°C for 3min, [TA812677]) (1:500)



Immunohistochemical staining of paraffin-embedded Human lymphoma tissue using anti-CAV1 mouse monoclonal antibody. (Heat-induced epitope retrieval by 1mM EDTA in 10mM Tris buffer (pH8.5) at 120°C for 3min, [TA812677]) (1:500)



Immunohistochemical staining of paraffin-embedded Human spleen tissue within the normal limits using anti-CAV1 mouse monoclonal antibody. (Heat-induced epitope retrieval by 1mM EDTA in 10mM Tris buffer (pH8.5) at 120°C for 3min, [TA812677]) (1:500)