

Product datasheet for **TA812659**

MMP11 Mouse Monoclonal Antibody [Clone ID: OTI3E10]

Product data:

Product Type:	Primary Antibodies
Clone Name:	OTI3E10
Applications:	WB
Recommended Dilution:	WB 1:500
Reactivity:	Human
Host:	Mouse
Isotype:	IgG1
Clonality:	Monoclonal
Immunogen:	Human recombinant protein fragment corresponding to amino acids 239-488 of human MMP11 (NP_005931) produced in E.coli.
Formulation:	PBS (pH 7.3) containing 1% BSA, 50% glycerol and 0.02% sodium azide.
Concentration:	1 mg/ml
Purification:	Purified from mouse ascites fluids or tissue culture supernatant by affinity chromatography (protein A/G)
Conjugation:	Unconjugated
Storage:	Store at -20°C as received.
Stability:	Stable for 12 months from date of receipt.
Predicted Protein Size:	54.59 kDa
Gene Name:	matrix metalloproteinase 11
Database Link:	NP_005931 Entrez Gene 4320 Human P24347



[View online »](#)

Background:

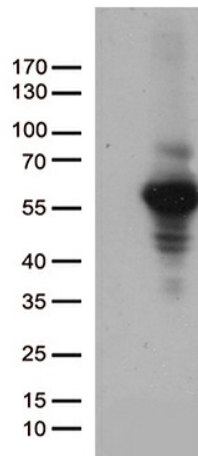
Proteins of the matrix metalloproteinase (MMP) family are involved in the breakdown of extracellular matrix in normal physiological processes, such as embryonic development, reproduction, and tissue remodeling, as well as in disease processes, such as arthritis and metastasis. Most MMP's are secreted as inactive proproteins which are activated when cleaved by extracellular proteinases. However, the enzyme encoded by this gene is activated intracellularly by furin within the constitutive secretory pathway. Also in contrast to other MMP's, this enzyme cleaves alpha 1-proteinase inhibitor but weakly degrades structural proteins of the extracellular matrix. [provided by RefSeq, Jul 2008]

Synonyms:

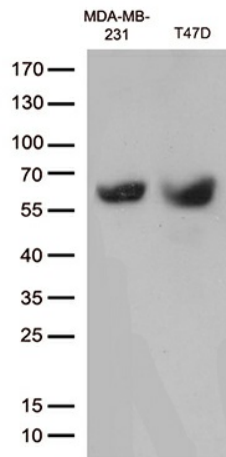
SL-3; ST3; STMY3

Protein Families:

Druggable Genome, Protease

Product images:


HEK293T cells were transfected with the pCMV6-ENTRY control (Cat# [PS100001], Left lane) or pCMV6-ENTRY MMP11 (Cat# [RC209223], Right lane) cDNA for 48 hrs and lysed. Equivalent amounts of cell lysates (5 ug per lane) were separated by SDS-PAGE and immunoblotted with anti-MMP11 (Cat# TA812659)(1:500). Positive lysates [LY416967] (100ug) and [LC416967] (20ug) can be purchased separately from OriGene.



Western blot analysis of extracts (35ug) from 2 cell lines lysates by using anti-MMP11 monoclonal antibody (1:500).