

Product datasheet for **TA812647**

NEDD4 Mouse Monoclonal Antibody [Clone ID: OTI7A1]

Product data:

Product Type:	Primary Antibodies
Clone Name:	OTI7A1
Applications:	WB
Recommended Dilution:	WB 1:500
Reactivity:	Human
Host:	Mouse
Isotype:	IgG2a
Clonality:	Monoclonal
Immunogen:	Human recombinant protein fragment corresponding to amino acids 160-460 of human NEDD4 (NP_940682) produced in E.coli.
Formulation:	PBS (pH 7.3) containing 1% BSA, 50% glycerol and 0.02% sodium azide.
Concentration:	1 mg/ml
Purification:	Purified from mouse ascites fluids or tissue culture supernatant by affinity chromatography (protein A/G)
Conjugation:	Unconjugated
Storage:	Store at -20°C as received.
Stability:	Stable for 12 months from date of receipt.
Predicted Protein Size:	140.7 kDa
Gene Name:	neural precursor cell expressed, developmentally down-regulated 4, E3 ubiquitin protein ligase
Database Link:	NP_940682 Entrez Gene 4734 Human P46934



[View online »](#)

Background:

This gene is the founding member of the NEDD4 family of HECT ubiquitin ligases that function in the ubiquitin proteasome system of protein degradation. The encoded protein contains an N-terminal calcium and phospholipid binding C2 domain followed by multiple tryptophan-rich WW domains and, a C-terminal HECT ubiquitin ligase catalytic domain. It plays critical role in the regulation of a number of membrane receptors, endocytic machinery components and the tumor suppressor PTEN. [provided by RefSeq, Jul 2016]

Synonyms:

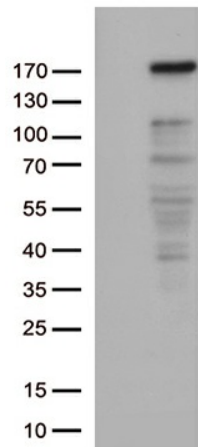
NEDD4-1; RPF1

Protein Families:

Druggable Genome

Protein Pathways:

Endocytosis, Ubiquitin mediated proteolysis

Product images:

HEK293T cells were transfected with the pCMV6-ENTRY control (Left lane) or pCMV6-ENTRY NEDD4 ([RC212738], Right lane) cDNA for 48 hrs and lysed. Equivalent amounts of cell lysates (5 ug per lane) were separated by SDS-PAGE and immunoblotted with anti-NEDD4 (1:500). Positive lysates [LY405051] (100ug) and [LC405051] (20ug) can be purchased separately from OriGene.