

Product datasheet for **TA812617BM**

IL28 Receptor alpha (IFNLR1) Mouse Monoclonal Antibody (HRP conjugated) [Clone ID: OTI8G1]

Product data:

Product Type:	Primary Antibodies
Clone Name:	OTI8G1
Applications:	IHC, WB
Recommended Dilution:	WB 1:500, IHC 1:500
Reactivity:	Human
Host:	Mouse
Isotype:	IgG1
Clonality:	Monoclonal
Immunogen:	Human recombinant protein fragment corresponding to amino acids 21-228 of human IFNLR1 (NP_734464) produced in E.coli.
Formulation:	PBS (pH 7.3) containing 1% BSA, 50% glycerol.
Concentration:	0.5 mg/ml
Purification:	Purified from mouse ascites fluids or tissue culture supernatant by affinity chromatography (protein A/G)
Conjugation:	HRP
Storage:	Store at -20°C as received.
Stability:	Stable for 12 months from date of receipt.
Gene Name:	interferon lambda receptor 1
Database Link:	NP_734464 Entrez Gene 163702 Human Q8IU57



[View online »](#)

Background:

The protein encoded by this gene belongs to the class II cytokine receptor family. This protein forms a receptor complex with interleukine 10 receptor, beta (IL10RB). The receptor complex has been shown to interact with three closely related cytokines, including interleukin 28A (IL28A), interleukin 28B (IL28B), and interleukin 29 (IL29). The expression of all three cytokines can be induced by viral infection. The cells overexpressing this protein have been found to have enhanced responses to IL28A and IL29, but decreased response to IL28B. Three alternatively spliced transcript variants encoding distinct isoforms have been reported. [provided by RefSeq, Jul 2008]

Synonyms:

CRF2/12; IFNLR; IL-28R1; IL28RA; LICR2

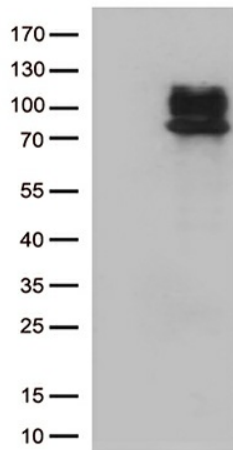
Protein Families:

Druggable Genome, Transmembrane

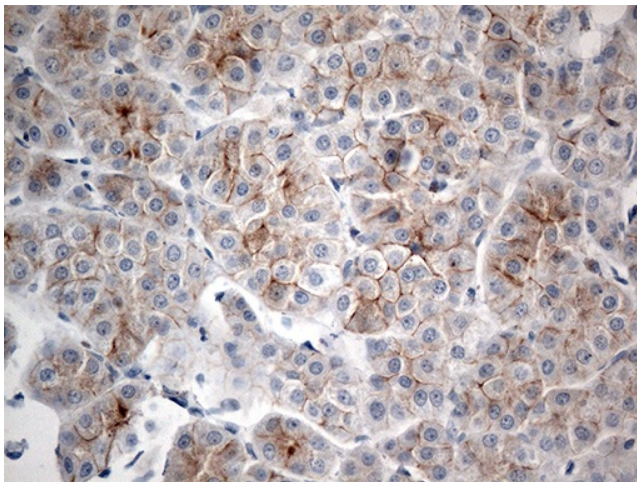
Protein Pathways:

Cytokine-cytokine receptor interaction, Jak-STAT signaling pathway

Product images:



HEK293T cells were transfected with the pCMV6-ENTRY control (Cat# [PS100001], Left lane) or pCMV6-ENTRY IFNLR1 (Cat# [RC222275], Right lane) cDNA for 48 hrs and lysed. Equivalent amounts of cell lysates (5 ug per lane) were separated by SDS-PAGE and immunoblotted with anti-IFNLR1 (Cat# [TA812617])(1:500).



Immunohistochemical staining of paraffin-embedded Carcinoma of Human liver tissue using anti-IFNLR1 mouse monoclonal antibody. (Heat-induced epitope retrieval by 1mM EDTA in 10mM Tris buffer (pH8.5) at 120°C for 3min, [TA812617]) (1:500)