

Product datasheet for **TA812587AM**

CD272 (BTLA) Mouse Monoclonal Antibody (Biotin conjugated) [Clone ID: OTI1E5]

Product data:

Product Type:	Primary Antibodies
Clone Name:	OTI1E5
Applications:	FC
Recommended Dilution:	FLOW 1:100
Reactivity:	Human
Host:	Mouse
Isotype:	IgG1
Clonality:	Monoclonal
Immunogen:	Human recombinant protein fragment corresponding to amino acids 31-157+Mouse Fc of human BTLA (NP_861445) produced in HEK293T cell.
Formulation:	PBS (pH 7.3) containing 1% BSA, 50% glycerol and 0.02% sodium azide.
Concentration:	0.5 mg/ml
Purification:	Purified from mouse ascites fluids or tissue culture supernatant by affinity chromatography (protein A/G)
Conjugation:	Biotin
Storage:	Store at -20°C as received.
Stability:	Stable for 12 months from date of receipt.
Predicted Protein Size:	32.6 kDa
Gene Name:	B and T lymphocyte associated
Database Link:	NP_861445 Entrez Gene 151888 Human Q7Z6A9
Background:	This gene encodes a member of the immunoglobulin superfamily. The encoded protein contains a single immunoglobulin (Ig) domain and is a receptor that relays inhibitory signals to suppress the immune response. Alternative splicing results in multiple transcript variants. Polymorphisms in this gene have been associated with an increased risk of rheumatoid arthritis. [provided by RefSeq, Aug 2011]

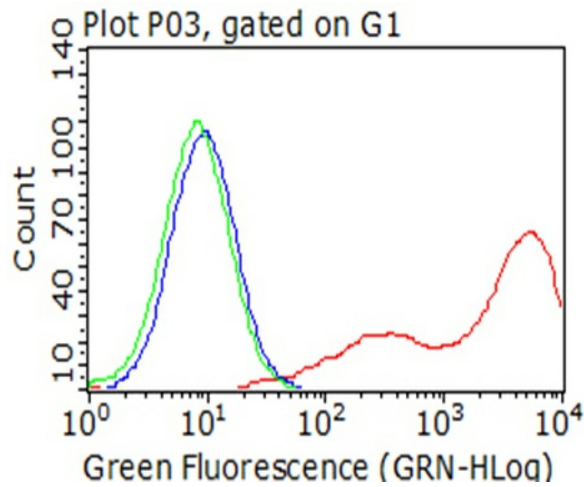


[View online »](#)

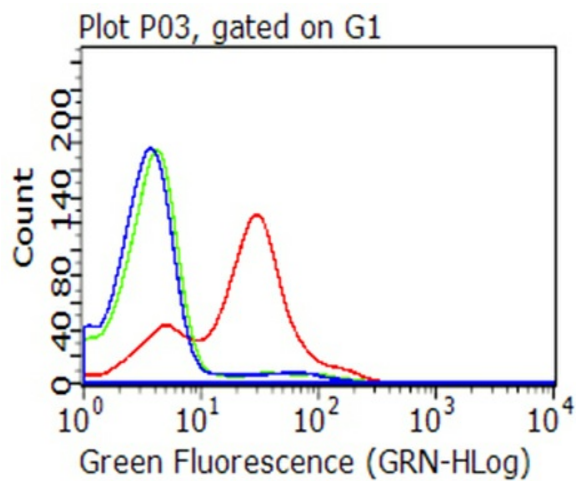
Synonyms: BTLA1; CD272

Protein Families: Transmembrane

Product images:



Flow cytometric analysis of living 293T cells transfected with BTLA overexpression plasmid ([RC219458], Red)/empty vector ([PS100001], Blue) using anti-BTLA antibody ([TA812587]). Cells incubated with a non-specific antibody (Green) were used as isotype control (1:100).



Flow cytometric analysis of living PBMCs, using anti-BTLA antibody ([TA812587], Red), compared to an isotype control (green), and a PBS control (blue) (1:100).