

Product datasheet for **TA812575BM**

TIM 3 (HAVCR2) Mouse Monoclonal Antibody (HRP conjugated) [Clone ID: OTI7B10]

Product data:

Product Type:	Primary Antibodies
Clone Name:	OTI7B10
Applications:	FC, WB
Recommended Dilution:	WB 1:500, FLOW 1:100
Reactivity:	Human
Host:	Mouse
Isotype:	IgG1
Clonality:	Monoclonal
Immunogen:	Full length human recombinant protein of human HAVCR2 (NP_116171) produced in HEK293T cell.
Formulation:	PBS (pH 7.3) containing 1% BSA, 50% glycerol.
Concentration:	0.5 mg/ml
Purification:	Purified from mouse ascites fluids or tissue culture supernatant by affinity chromatography (protein A/G)
Conjugation:	HRP
Storage:	Store at -20°C as received.
Stability:	Stable for 12 months from date of receipt.
Predicted Protein Size:	33.2 kDa
Gene Name:	hepatitis A virus cellular receptor 2
Database Link:	NP_116171 Entrez Gene 84868 Human Q8TDQ0



[View online »](#)

Background:

The protein encoded by this gene belongs to the immunoglobulin superfamily, and TIM family of proteins. CD4-positive T helper lymphocytes can be divided into types 1 (Th1) and 2 (Th2) on the basis of their cytokine secretion patterns. Th1 cells are involved in cell-mediated immunity to intracellular pathogens and delayed-type hypersensitivity reactions, whereas, Th2 cells are involved in the control of extracellular helminthic infections and the promotion of atopic and allergic diseases. This protein is a Th1-specific cell surface protein that regulates macrophage activation, and inhibits Th1-mediated auto- and alloimmune responses, and promotes immunological tolerance. [provided by RefSeq, Sep 2011]

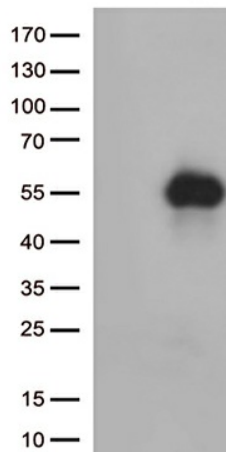
Synonyms:

CD366; HAVcr-2; KIM-3; SPTCL; Tim-3; TIM3; TIMD-3; TIMD3

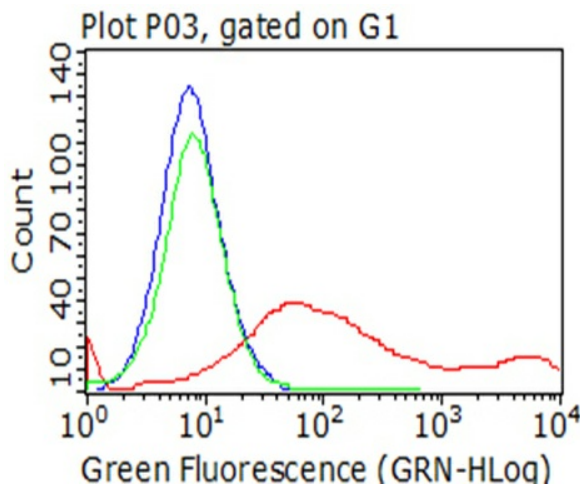
Protein Families:

Druggable Genome, Transmembrane

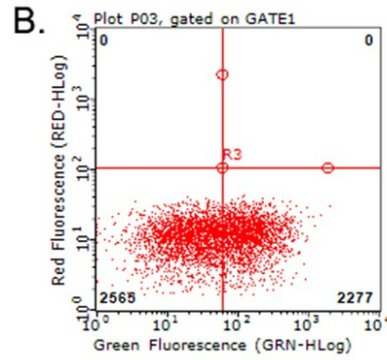
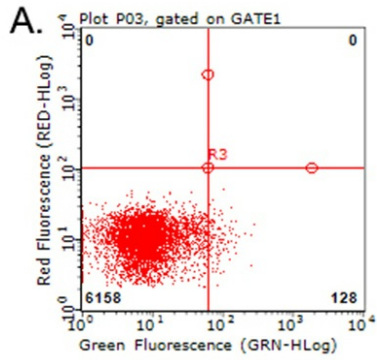
Product images:



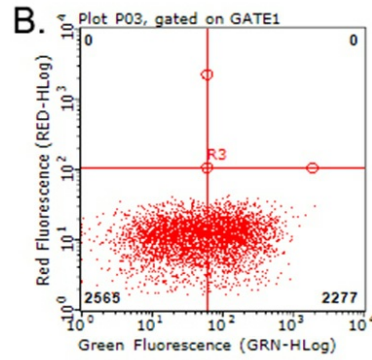
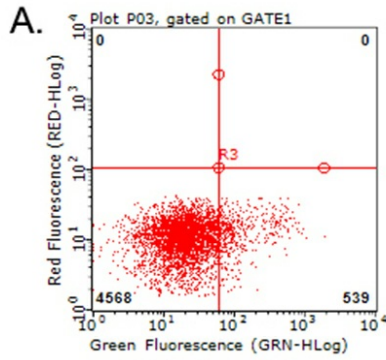
HEK293T cells were transfected with the pCMV6-ENTRY control (Left lane) or pCMV6-ENTRY HAVCR2 ([RC209440], Right lane) cDNA for 48 hrs and lysed. Equivalent amounts of cell lysates (5 ug per lane) were separated by SDS-PAGE and immunoblotted with anti-HAVCR. Positive lysates [LY403200] (100ug) and [LC403200] (20ug) can be purchased separately from OriGene.



Flow cytometric analysis of living 293T cells transfected with HAVCR2 overexpression plasmid ([RC209440], Red)/empty vector ([PS100001], Blue) using anti-HAVCR2 antibody ([TA812575]). Cells incubated with a non-specific antibody (Green) were used as isotype control (1:100).



Flow cytometric analysis of living PBMCs treated with 10ug/ml PHA for 72h (Right)/untreated (Left) using anti-HAVCR2 antibody ([TA812575]) (1:100).



Flow cytometric analysis of living PBMCs treated with 10ug/ml PHA for 72h (Right) using anti-HAVCR2 antibody ([TA812575]). Cells incubated with a non-specific antibody (Left) were used as isotype control (1:100).