

Product datasheet for **TA812551M**

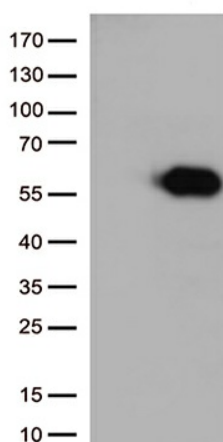
CD27 Mouse Monoclonal Antibody [Clone ID: OTI3F1]

Product data:

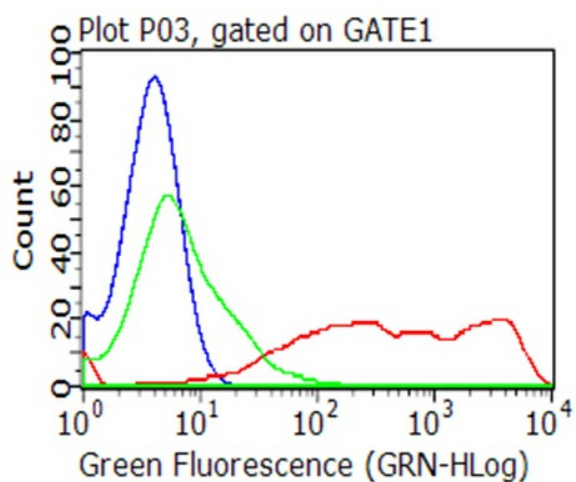
| | |
|-------------------------|---|
| Product Type: | Primary Antibodies |
| Clone Name: | OTI3F1 |
| Applications: | FC, WB |
| Recommended Dilution: | WB 1:500, FLOW 1:100 |
| Reactivity: | Human |
| Host: | Mouse |
| Isotype: | IgG1 |
| Clonality: | Monoclonal |
| Immunogen: | Full length human recombinant protein of human CD27 (NP_001233) produced in HEK293T cell. |
| Formulation: | PBS (pH 7.3) containing 1% BSA, 50% glycerol and 0.02% sodium azide. |
| Concentration: | 1 mg/ml |
| Purification: | Purified from mouse ascites fluids or tissue culture supernatant by affinity chromatography (protein A/G) |
| Conjugation: | Unconjugated |
| Storage: | Store at -20°C as received. |
| Stability: | Stable for 12 months from date of receipt. |
| Predicted Protein Size: | 29.16 kDa |
| Gene Name: | CD27 molecule |
| Database Link: | NP_001233 Entrez Gene 939 Human P26842 |
| Background: | Receptor for CD70/CD27L. May play a role in survival of activated T-cells. May play a role in apoptosis through association with SIVA1. [UniProtKB/Swiss-Prot Function] |
| Synonyms: | S152; S152. LPFS2; T14; TNFRSF7; Tp55 |
| Protein Families: | Druggable Genome, Transmembrane |
| Protein Pathways: | Cytokine-cytokine receptor interaction |


[View online »](#)

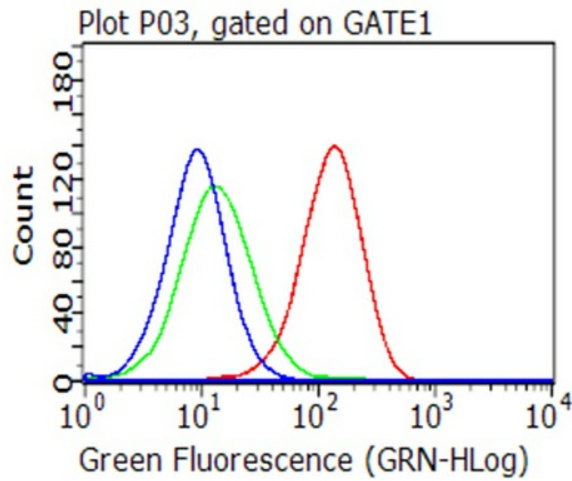
Product images:



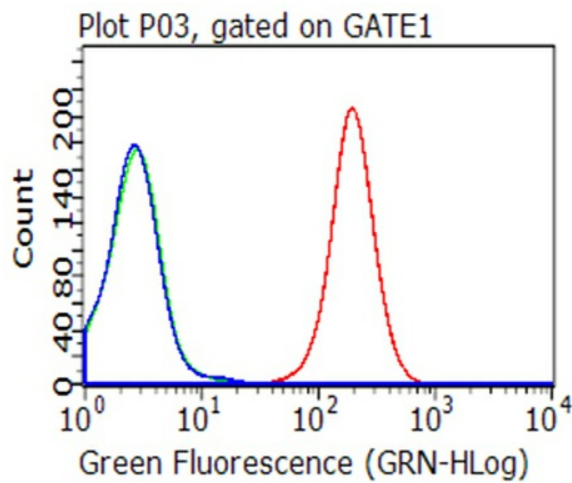
HEK293T cells were transfected with the pCMV6-ENTRY control (Left lane) or pCMV6-ENTRY CD27 ([RC204252], Right lane) cDNA for 48 hrs and lysed. Equivalent amounts of cell lysates (5 ug per lane) were separated by SDS-PAGE and immunoblotted with anti-CD27 (1:500).



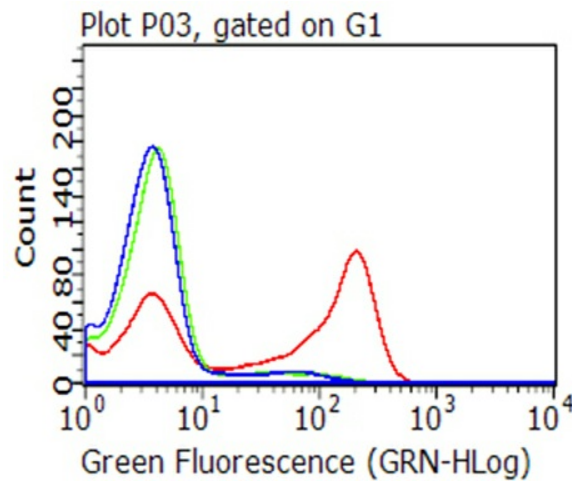
Flow cytometric analysis of living 293T cells transfected with CD27 overexpression plasmid ([RC204252]), Red/empty vector ([PS100001], Blue) using anti-CD27 antibody ([TA812551]). Cells incubated with a non-specific antibody (Green) were used as isotype control (1:100).



Flow cytometric analysis of living Raji cells, using anti-CD27 antibody ([TA812551], Red), compared to an isotype control (green), and a PBS control (blue) (1:100).



Flow cytometric analysis of living Ramos cells, using anti-CD27 antibody ([TA812551], Red), compared to an isotype control (green), and a PBS control (blue) (1:100).



Flow cytometric analysis of living PBMCs, using anti-CD27 antibody ([TA812551], Red), compared to an isotype control (green), and a PBS control (blue) (1:100).