

## Product datasheet for **TA812551**

### CD27 Mouse Monoclonal Antibody [Clone ID: OTI3F1]

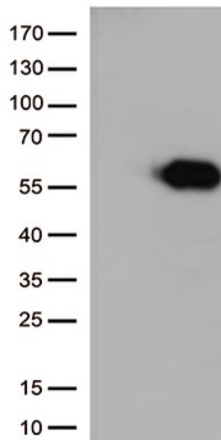
#### Product data:

Product Type:	Primary Antibodies
Clone Name:	OTI3F1
Applications:	FC, WB
Recommended Dilution:	WB 1:500, FLOW 1:100
Reactivity:	Human
Host:	Mouse
Isotype:	IgG1
Clonality:	Monoclonal
Immunogen:	Full length human recombinant protein of human CD27 (NP_001233) produced in HEK293T cell.
Formulation:	PBS (pH 7.3) containing 1% BSA, 50% glycerol and 0.02% sodium azide.
Concentration:	1 mg/ml
Purification:	Purified from mouse ascites fluids or tissue culture supernatant by affinity chromatography (protein A/G)
Conjugation:	Unconjugated
Storage:	Store at -20°C as received.
Stability:	Stable for 12 months from date of receipt.
Predicted Protein Size:	29.16 kDa
Gene Name:	CD27 molecule
Database Link:	<a href="#">NP_001233</a> <a href="#">Entrez Gene 939 Human</a> <a href="#">P26842</a>
Background:	Receptor for CD70/CD27L. May play a role in survival of activated T-cells. May play a role in apoptosis through association with SIVA1. [UniProtKB/Swiss-Prot Function]
Synonyms:	S152; S152. LPFS2; T14; TNFRSF7; Tp55
Protein Families:	Druggable Genome, Transmembrane
Protein Pathways:	Cytokine-cytokine receptor interaction

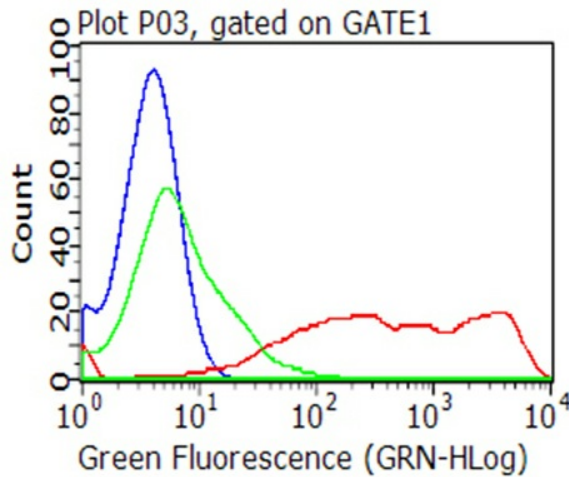


[View online »](#)

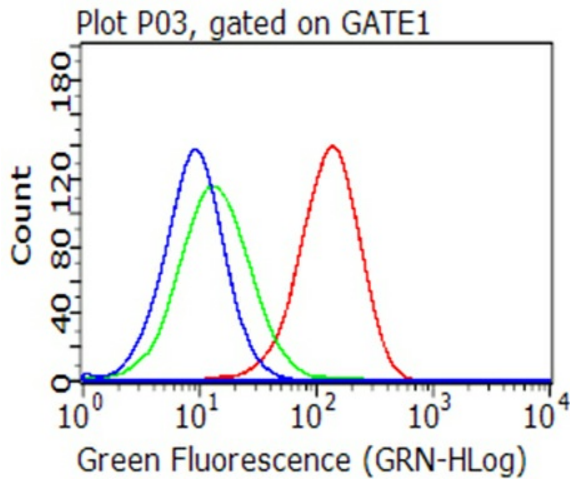
**Product images:**



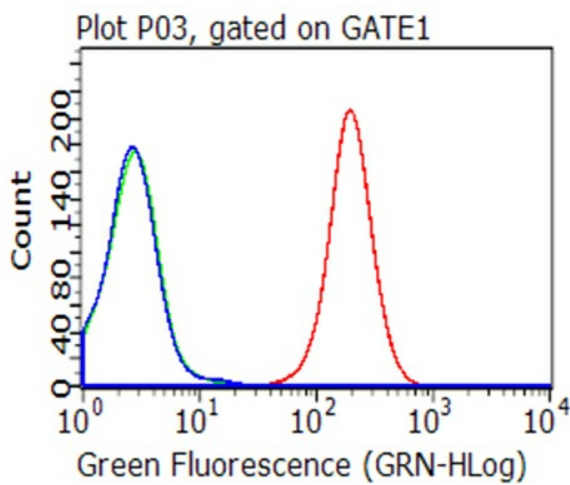
HEK293T cells were transfected with the pCMV6-ENTRY control (Left lane) or pCMV6-ENTRY CD27 ([RC204252], Right lane) cDNA for 48 hrs and lysed. Equivalent amounts of cell lysates (5 ug per lane) were separated by SDS-PAGE and immunoblotted with anti-CD27 (1:500).



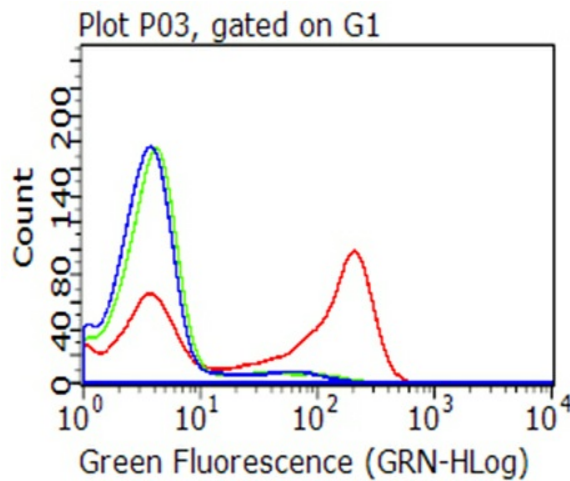
Flow cytometric analysis of living 293T cells transfected with CD27 overexpression plasmid ([RC204252]), Red/empty vector ([PS100001], Blue) using anti-CD27 antibody (TA812551). Cells incubated with a non-specific antibody (Green) were used as isotype control (1:100).



Flow cytometric analysis of living Raji cells, using anti-CD27 antibody (TA812551, Red), compared to an isotype control (green), and a PBS control (blue) (1:100).



Flow cytometric analysis of living Ramos cells, using anti-CD27 antibody (TA812551, Red), compared to an isotype control (green), and a PBS control (blue) (1:100).



Flow cytometric analysis of living PBMCs, using anti-CD27 antibody (TA812551, Red), compared to an isotype control (green), and a PBS control (blue) (1:100).