

Product datasheet for **TA812546M**

beta Arrestin 1 (ARRB1) Mouse Monoclonal Antibody [Clone ID: OTI2B3]

Product data:

Product Type:	Primary Antibodies
Clone Name:	OTI2B3
Applications:	WB
Recommended Dilution:	WB 1:500-2000
Reactivity:	Human, Mouse, Rat
Host:	Mouse
Isotype:	IgG1
Clonality:	Monoclonal
Immunogen:	Full length human recombinant protein of human ARRB1 (NP_004032) produced in E.coli.
Formulation:	PBS (pH 7.3) containing 1% BSA, 50% glycerol and 0.02% sodium azide.
Concentration:	1 mg/ml
Purification:	Purified from mouse ascites fluids or tissue culture supernatant by affinity chromatography (protein A/G)
Conjugation:	Unconjugated
Storage:	Shipped at -20°C or with ice packs, Upon delivery store at -20°C. Dilute in PBS(pH7.3) if necessary. Stable for 12 months from date of receipt. Avoid repeated freeze-thaws.
Stability:	Stable for 12 months from date of receipt.
Predicted Protein Size:	47.1 kDa
Gene Name:	arrestin beta 1
Database Link:	NP_004032 Entrez Gene 25387 Rat Entrez Gene 109689 Mouse Entrez Gene 408 Human P49407

[View online »](#)

Background:

Members of arrestin/beta-arrestin protein family are thought to participate in agonist-mediated desensitization of G-protein-coupled receptors and cause specific dampening of cellular responses to stimuli such as hormones, neurotransmitters, or sensory signals. Arrestin beta 1 is a cytosolic protein and acts as a cofactor in the beta-adrenergic receptor kinase (BARK) mediated desensitization of beta-adrenergic receptors. Besides the central nervous system, it is expressed at high levels in peripheral blood leukocytes, and thus the BARK/beta-arrestin system is believed to play a major role in regulating receptor-mediated immune functions. Alternatively spliced transcripts encoding different isoforms of arrestin beta 1 have been described. [provided by RefSeq, Jan 2011].

Synonyms:

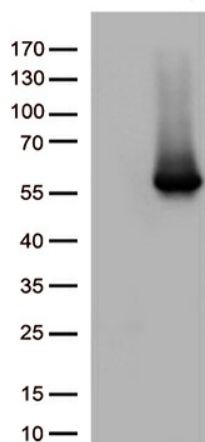
ARB1; ARR1

Protein Families:

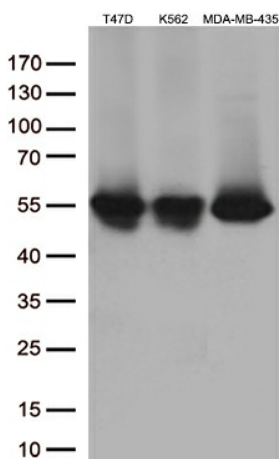
Druggable Genome

Protein Pathways:

Chemokine signaling pathway, Endocytosis, MAPK signaling pathway

Product images:


HEK293T cells were transfected with the pCMV6-ENTRY control (Left lane) or pCMV6-ENTRY ARRB1 ([RC201279], Right lane) cDNA for 48 hrs and lysed. Equivalent amounts of cell lysates (5 ug per lane) were separated by SDS-PAGE and immunoblotted with anti-ARRB1.(1:2000)



Western blot analysis of extracts (35ug) from 3 cell lines lysates by using anti-ARRB1 monoclonal antibody. (1:500)