

Product datasheet for **TA812542BM**

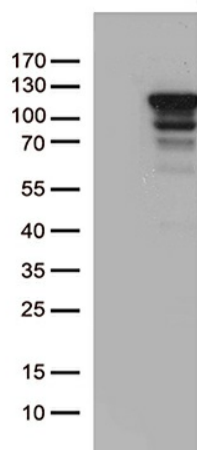
MCF2 Mouse Monoclonal Antibody (HRP conjugated) [Clone ID: OTI3E4]

Product data:

Product Type:	Primary Antibodies
Clone Name:	OTI3E4
Applications:	WB
Recommended Dilution:	WB 1:500
Reactivity:	Human
Host:	Mouse
Isotype:	IgG1
Clonality:	Monoclonal
Immunogen:	Human recombinant protein fragment corresponding to amino acids 872-1001 of human MCF2 (NP_001093325) produced in E.coli.
Formulation:	PBS (pH 7.3) containing 1% BSA, 50% glycerol.
Concentration:	0.5 mg/ml
Purification:	Purified from mouse ascites fluids or tissue culture supernatant by affinity chromatography (protein A/G)
Conjugation:	HRP
Storage:	Store at -20°C as received.
Stability:	Stable for 12 months from date of receipt.
Gene Name:	MCF.2 cell line derived transforming sequence
Database Link:	NP_001165347 Entrez Gene 4168 Human P10911
Background:	The oncogenic protein encoded by this gene is a guanine nucleotide exchange factor (GEF) that exerts control over some members of the Rho family of small GTPases. Several transcript variants encoding different isoforms have been found for this gene. These isoforms exhibit different expression patterns and varying levels of GEF activity. [provided by RefSeq, Jan 2010]
Synonyms:	ARHGEF21; DBL
Protein Families:	Druggable Genome



[View online »](#)

Product images:

HEK293T cells were transfected with the pCMV6-ENTRY control (Left lane) or pCMV6-ENTRY MCF2 ([RC230610], Right lane) cDNA for 48 hrs and lysed. Equivalent amounts of cell lysates (5 ug per lane) were separated by SDS-PAGE and immunoblotted with anti-MCF2 (1:500). Positive lysates [LY433609] (100ug) and [LC433609] (20ug) can be purchased separately from OriGene.