

Product datasheet for **TA812536**

MCF2 Mouse Monoclonal Antibody [Clone ID: OTI2C12]

Product data:

Product Type:	Primary Antibodies
Clone Name:	OTI2C12
Applications:	IHC, WB
Recommended Dilution:	WB 1:500, IHC 1:500
Reactivity:	Human
Host:	Mouse
Isotype:	IgG1
Clonality:	Monoclonal
Immunogen:	Human recombinant protein fragment corresponding to amino acids 872-1001 of human MCF2 (NP_001093325) produced in E.coli.
Formulation:	PBS (pH 7.3) containing 1% BSA, 50% glycerol and 0.02% sodium azide.
Concentration:	1 mg/ml
Purification:	Purified from mouse ascites fluids or tissue culture supernatant by affinity chromatography (protein A/G)
Conjugation:	Unconjugated
Storage:	Store at -20°C as received.
Stability:	Stable for 12 months from date of receipt.
Gene Name:	MCF.2 cell line derived transforming sequence
Database Link:	NP_001165347 Entrez Gene 4168 Human P10911
Background:	The oncogenic protein encoded by this gene is a guanine nucleotide exchange factor (GEF) that exerts control over some members of the Rho family of small GTPases. Several transcript variants encoding different isoforms have been found for this gene. These isoforms exhibit different expression patterns and varying levels of GEF activity. [provided by RefSeq, Jan 2010]
Synonyms:	ARHGEF21; DBL
Protein Families:	Druggable Genome



[View online »](#)

Product images:

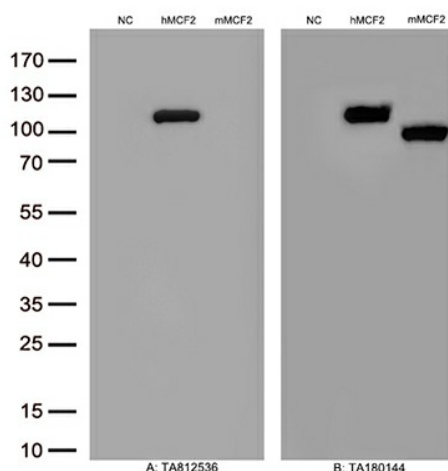
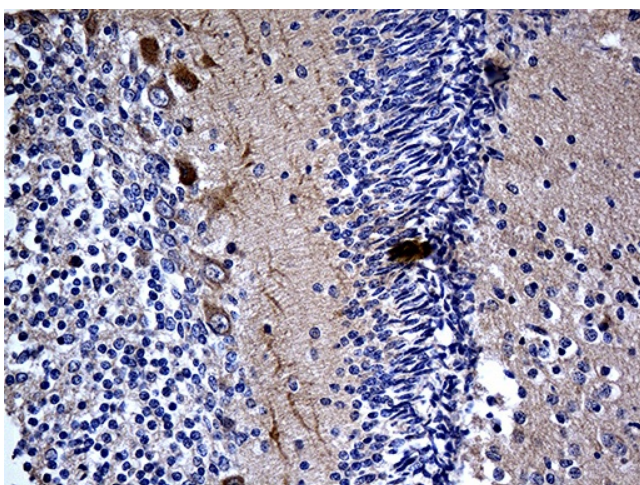


Figure A, Western blot analysis of overexpressed lysates(15ug per lane) from HEK293T cells transfected with empty plasmid ([PS100001], NC), human MCF2 plasmid ([RC230610], hMCF2), mouse MCF2 plasmid ([MR215353], mMCF2) using anti-MCF2 antibody TA812536(1:500). Figure B, Western blot analysis of the same samples as figure A with anti-DDK antibody ([TA180144], 1:1000)



Immunohistochemical staining of paraffin-embedded Human embryonic cerebellum within the normal limits using anti-MCF2 mouse monoclonal antibody. (Heat-induced epitope retrieval by 1mM EDTA in 10mM Tris buffer (pH8.5) at 120°C for 3min, TA812536) (1:500)