

## Product datasheet for **TA812533S**

### MASP2 Mouse Monoclonal Antibody [Clone ID: OTI2F10]

#### Product data:

Product Type:	Primary Antibodies
Clone Name:	OTI2F10
Applications:	WB
Recommended Dilution:	WB 1:500
Reactivity:	Human
Host:	Mouse
Isotype:	IgG2a
Clonality:	Monoclonal
Immunogen:	Human recombinant protein fragment corresponding to amino acids 445-686 of human MASP2 (NP_006601) produced in E.coli.
Formulation:	PBS (pH 7.3) containing 1% BSA, 50% glycerol and 0.02% sodium azide.
Concentration:	1 mg/ml
Purification:	Purified from mouse ascites fluids or tissue culture supernatant by affinity chromatography (protein A/G)
Conjugation:	Unconjugated
Storage:	Store at -20°C as received.
Stability:	Stable for 12 months from date of receipt.
Predicted Protein Size:	75.69 kDa
Gene Name:	mannan binding lectin serine peptidase 2
Database Link:	<a href="#">NP_006601</a> <a href="#">Entrez Gene 10747 Human</a> <a href="#">O00187</a>



[View online »](#)

**Background:**

This gene encodes a member of the peptidase S1 family of serine proteases. The encoded preproprotein is proteolytically processed to generate A and B chains that heterodimerize to form the mature protease. This protease cleaves complement components C2 and C4 in order to generate C3 convertase in the lectin pathway of the complement system. The encoded protease also plays a role in the coagulation cascade through cleavage of prothrombin to form thrombin. Myocardial infarction and acute stroke patients exhibit reduced serum concentrations of the encoded protein. Alternative splicing results in multiple transcript variants, at least one of which encodes an isoform that is proteolytically processed. [provided by RefSeq, Feb 2016]

**Synonyms:**

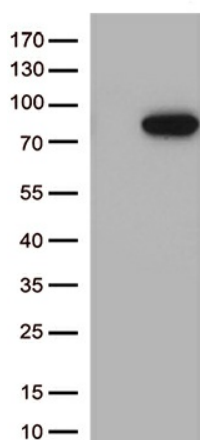
MAP-2; MAP19; MASP-2; MASP1P1; sMAP

**Protein Families:**

Druggable Genome, Protease, Secreted Protein

**Protein Pathways:**

Complement and coagulation cascades

**Product images:**

HEK293T cells were transfected with the pCMV6-ENTRY control (Cat# [PS100001], Left lane) or pCMV6-ENTRY MASP2 (Cat# [RC216665], Right lane) cDNA for 48 hrs and lysed. Equivalent amounts of cell lysates (5 ug per lane) were separated by SDS-PAGE and immunoblotted with anti-MASP2 (Cat# [TA812533])(1:500).