

## Product datasheet for **TA812521AM**

### GM CSF Receptor alpha (CSF2RA) Mouse Monoclonal Antibody (Biotin conjugated) [Clone ID: OTI2B2]

#### Product data:

Product Type:	Primary Antibodies
Clone Name:	OTI2B2
Applications:	FC, WB
Recommended Dilution:	WB 1:500, FLOW 1:100
Reactivity:	Human
Host:	Mouse
Isotype:	IgG1
Clonality:	Monoclonal
Immunogen:	Human recombinant protein fragment corresponding to amino acids 23-320 of human CSF2RA (NP_758448) produced in E.coli.
Formulation:	PBS (pH 7.3) containing 1% BSA, 50% glycerol and 0.02% sodium azide.
Concentration:	0.5 mg/ml
Purification:	Purified from mouse ascites fluids or tissue culture supernatant by affinity chromatography (protein A/G)
Conjugation:	Biotin
Storage:	Store at -20°C as received.
Stability:	Stable for 12 months from date of receipt.
Predicted Protein Size:	44.1 kDa
Gene Name:	colony stimulating factor 2 receptor alpha subunit
Database Link:	<a href="#">NP_758448</a> <a href="#">Entrez Gene 1438 Human</a> <a href="#">P15509</a>



[View online »](#)

**Background:**

The protein encoded by this gene is the alpha subunit of the heterodimeric receptor for colony stimulating factor 2, a cytokine which controls the production, differentiation, and function of granulocytes and macrophages. The encoded protein is a member of the cytokine family of receptors. This gene is found in the pseudoautosomal region (PAR) of the X and Y chromosomes. Multiple transcript variants encoding different isoforms have been found for this gene, with some of the isoforms being membrane-bound and others being soluble. [provided by RefSeq, Jul 2008]

**Synonyms:**

alphaGMR; CD116; CDw116; CSF2R; CSF2RAX; CSF2RAY; CSF2RX; CSF2RY; GM-CSF-R-alpha; GMCSFR; GMCSFR-alpha; GMR; GMR-alpha; SMDP4

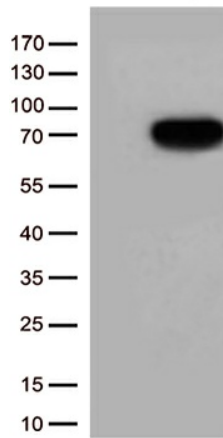
**Protein Families:**

Druggable Genome, Secreted Protein, Transmembrane

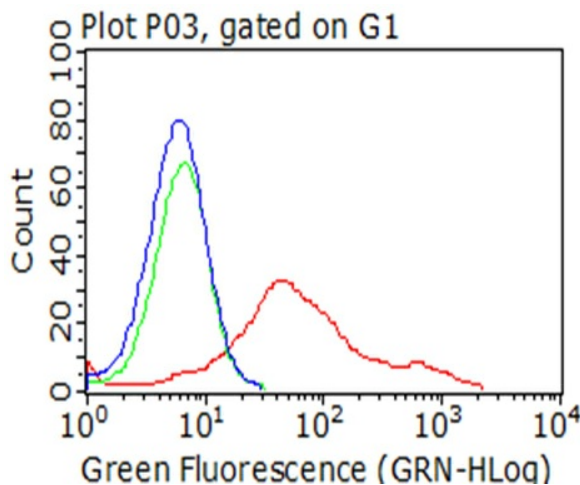
**Protein Pathways:**

Cytokine-cytokine receptor interaction, Hematopoietic cell lineage, Jak-STAT signaling pathway, Pathways in cancer

**Product images:**



HEK293T cells were transfected with the pCMV6-ENTRY control (Cat# [PS100001], Left lane) or pCMV6-ENTRY CSF2RA (Cat# [RC201204], Right lane) cDNA for 48 hrs and lysed. Equivalent amounts of cell lysates (5 ug per lane) were separated by SDS-PAGE and immunoblotted with anti-CSF2RA (Cat# [TA812521])(1:500).



Flow cytometric analysis of living 293T cells transfected with CSF2RA overexpression plasmid ([RC201204]), Red/empty vector ([PS100001], Blue) using anti-CSF2RA antibody ([TA812521]). Cells incubated with a non-specific antibody (Green) were used as isotype control (1:100).