

Product datasheet for TA812514M

Gamma tubulin complex component 3 (TUBGCP3) Mouse Monoclonal Antibody [Clone ID: OTI2A1]

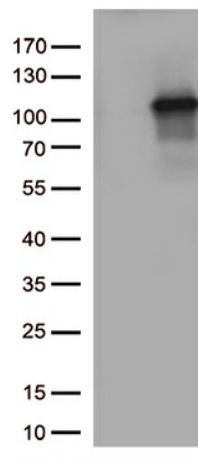
Product data:

Product Type:	Primary Antibodies
Clone Name:	OTI2A1
Applications:	WB
Recommended Dilution:	WB 1:500
Reactivity:	Human, Mouse
Host:	Mouse
Isotype:	IgG1
Clonality:	Monoclonal
Immunogen:	Human recombinant protein fragment corresponding to amino acids 338-456 of human TUBGCP3 (NP_006313) produced in E.coli.
Formulation:	PBS (pH 7.3) containing 1% BSA, 50% glycerol and 0.02% sodium azide.
Concentration:	1 mg/ml
Purification:	Purified from mouse ascites fluids or tissue culture supernatant by affinity chromatography (protein A/G)
Conjugation:	Unconjugated
Storage:	Shipped at -20°C or with ice packs, Upon delivery store at -20°C. Dilute in PBS(pH7.3) if necessary. Stable for 12 months from date of receipt. Avoid repeated freeze-thaws.
Stability:	Stable for 12 months from date of receipt.
Predicted Protein Size:	103.6 kDa
Gene Name:	tubulin gamma complex associated protein 3
Database Link:	NP_006313 Entrez Gene 259279 Mouse Entrez Gene 10426 Human Q96CW5
Background:	Gamma-tubulin complex is necessary for microtubule nucleation at the centrosome. [UniProtKB/Swiss-Prot Function]
Synonyms:	104p; ALP6; GCP3; Grip104; SPBC98; Spc98; Spc98p

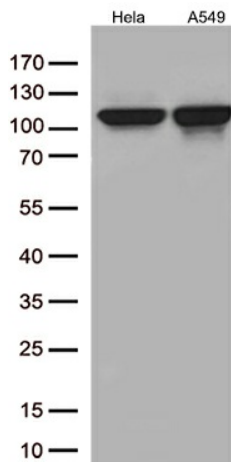

[View online »](#)

Protein Families: Druggable Genome

Product images:



HEK293T cells were transfected with the pCMV6-ENTRY control (Left lane) or pCMV6-ENTRY TUBGCP3 ([RC207395], Right lane) cDNA for 48 hrs and lysed. Equivalent amounts of cell lysates (5 ug per lane) were separated by SDS-PAGE and immunoblotted with anti-TUBGCP3.(1:500)



Western blot analysis of extracts (35ug) from 2 cell lines lysates by using anti-TUBGCP3 monoclonal antibody. (1:500)