

Product datasheet for TA812512M

Prothrombin (F2) Mouse Monoclonal Antibody [Clone ID: OTI5B11]

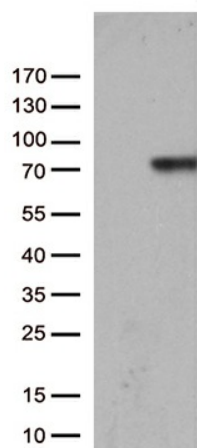
Product data:

Product Type:	Primary Antibodies
Clone Name:	OTI5B11
Applications:	WB
Recommended Dilution:	WB 1:500
Reactivity:	Human
Host:	Mouse
Isotype:	IgG2a
Clonality:	Monoclonal
Immunogen:	Human recombinant protein fragment corresponding to amino acids 44-622 of human F2 (NP_000497) produced in HEK293T cell.
Formulation:	PBS (pH 7.3) containing 1% BSA, 50% glycerol and 0.02% sodium azide.
Concentration:	1 mg/ml
Purification:	Purified from mouse ascites fluids or tissue culture supernatant by affinity chromatography (protein A/G)
Conjugation:	Unconjugated
Storage:	Store at -20°C as received.
Stability:	Stable for 12 months from date of receipt.
Predicted Protein Size:	70.01 kDa
Gene Name:	coagulation factor II, thrombin
Database Link:	NP_000497 Entrez Gene 2147 Human P00734
Background:	Coagulation factor II is proteolytically cleaved to form thrombin in the first step of the coagulation cascade which ultimately results in the stemming of blood loss. F2 also plays a role in maintaining vascular integrity during development and postnatal life. Peptides derived from the C-terminus of this protein have antimicrobial activity against E. coli and P. aeruginosa. Mutations in F2 lead to various forms of thrombosis and dysprothrombinemia. Alternative splicing results in multiple transcript variants. [provided by RefSeq, Aug 2015]

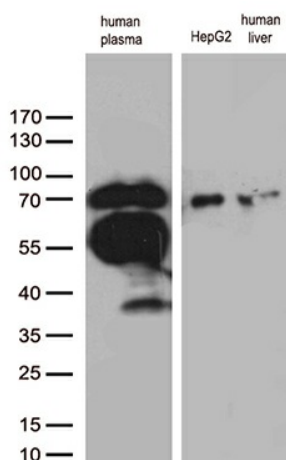

[View online »](#)

Synonyms:	PT; RPRGL2; THPH1
Protein Families:	Druggable Genome, Protease, Secreted Protein
Protein Pathways:	Complement and coagulation cascades, Neuroactive ligand-receptor interaction, Regulation of actin cytoskeleton

Product images:



HEK293T cells were transfected with the pCMV6-ENTRY control (Left lane) or pCMV6-ENTRY F2 ([RC208589], Right lane) cDNA for 48 hrs and lysed. Equivalent amounts of cell lysates (5 ug per lane) were separated by SDS-PAGE and immunoblotted with anti-F2 (1:500). Positive lysates [LY400182] (100ug) and [LC400182] (20ug) can be purchased separately from OriGene.



Western blot analysis of extracts from human plasma, HepG2 cell line and human liver tissue by using anti-F2 monoclonal antibody (1:500).