

Product datasheet for **TA812508AM**

LDL Receptor (LDLR) Mouse Monoclonal Antibody (Biotin conjugated) [Clone ID: OTI8D12]

Product data:

Product Type:	Primary Antibodies
Clone Name:	OTI8D12
Applications:	FC, WB
Recommended Dilution:	WB 1:2000
Reactivity:	Human
Host:	Mouse
Isotype:	IgG1
Clonality:	Monoclonal
Immunogen:	Full length human recombinant protein of human LDLR (NP_000518) produced in HEK293T cell.
Formulation:	PBS (pH 7.3) containing 1% BSA, 50% glycerol and 0.02% sodium azide.
Concentration:	0.5 mg/ml
Purification:	Purified from mouse ascites fluids or tissue culture supernatant by affinity chromatography (protein A/G)
Conjugation:	Biotin
Storage:	Store at -20°C as received.
Stability:	Stable for 12 months from date of receipt.
Predicted Protein Size:	95.38 kDa
Gene Name:	low density lipoprotein receptor
Database Link:	NP_000518 Entrez Gene 3949 Human P01130



[View online »](#)

Background:

The low density lipoprotein receptor (LDLR) gene family consists of cell surface proteins involved in receptor-mediated endocytosis of specific ligands. Low density lipoprotein (LDL) is normally bound at the cell membrane and taken into the cell ending up in lysosomes where the protein is degraded and the cholesterol is made available for repression of microsomal enzyme 3-hydroxy-3-methylglutaryl coenzyme A (HMG CoA) reductase, the rate-limiting step in cholesterol synthesis. At the same time, a reciprocal stimulation of cholesterol ester synthesis takes place. Mutations in this gene cause the autosomal dominant disorder, familial hypercholesterolemia. Alternate splicing results in multiple transcript variants. [provided by RefSeq, Sep 2010]

Synonyms:

FH; FHC; FHCL1; LDLCQ2

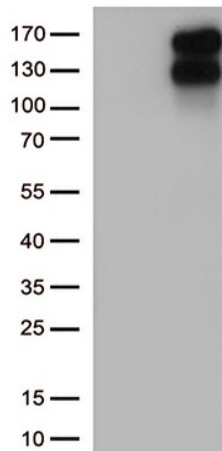
Protein Families:

Druggable Genome, ES Cell Differentiation/IPS, Transmembrane

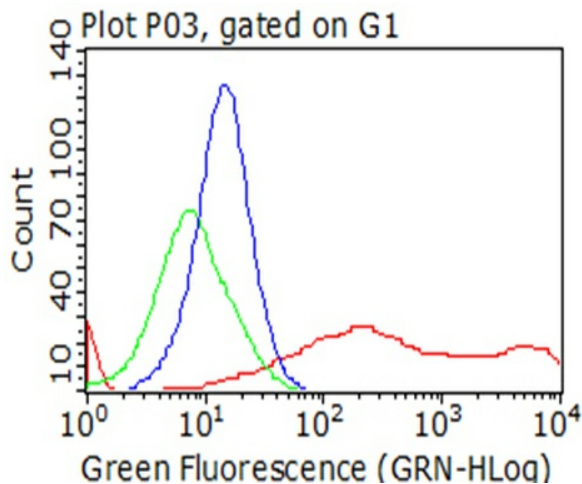
Protein Pathways:

Endocytosis

Product images:



HEK293T cells were transfected with the pCMV6-ENTRY control (Left lane) or pCMV6-ENTRY LDLR ([RC200006], Right lane) cDNA for 48 hrs and lysed. Equivalent amounts of cell lysates (5 ug per lane) were separated by SDS-PAGE and immunoblotted with anti-LDLR (1:2000). Positive lysates [LY400183] (100ug) and [LC400183] (20ug) can be purchased separately from OriGene.



Flow cytometric analysis of living 293T cells transfected with LDLR overexpression plasmid ([RC200006], Red)/empty vector ([PS100001], Blue) using anti-LDLR antibody ([TA812508]). Cells incubated with a non-specific antibody (Green) were used as isotype control (1:100).