

Product datasheet for **TA812498**

Y14 (RBM8A) Mouse Monoclonal Antibody [Clone ID: OTI10B5]

Product data:

Product Type:	Primary Antibodies
Clone Name:	OTI10B5
Applications:	WB
Recommended Dilution:	WB 1:250~500
Reactivity:	Human, Rat, Mouse
Host:	Mouse
Isotype:	IgG2a
Clonality:	Monoclonal
Immunogen:	Human recombinant protein fragment corresponding to amino acids 2-174 of human RBM8A (NP_005096) produced in E.coli.
Formulation:	PBS (pH 7.3) containing 1% BSA, 50% glycerol and 0.02% sodium azide.
Concentration:	1 mg/ml
Purification:	Purified from mouse ascites fluids or tissue culture supernatant by affinity chromatography (protein A/G)
Conjugation:	Unconjugated
Storage:	Store at -20°C as received.
Stability:	Stable for 12 months from date of receipt.
Predicted Protein Size:	19.7 kDa
Gene Name:	RNA binding motif protein 8A
Database Link:	NP_005096 Entrez Gene 60365 Mouse Entrez Gene 295284 Rat Entrez Gene 9939 Human Q9Y5S9



[View online »](#)

Background:

This gene encodes a protein with a conserved RNA-binding motif. The protein is found predominantly in the nucleus, although it is also present in the cytoplasm. It is preferentially associated with mRNAs produced by splicing, including both nuclear mRNAs and newly exported cytoplasmic mRNAs. It is thought that the protein remains associated with spliced mRNAs as a tag to indicate where introns had been present, thus coupling pre- and post-mRNA splicing events. Previously, it was thought that two genes encode this protein, RBM8A and RBM8B; it is now thought that the RBM8B locus is a pseudogene. There are two alternate translation start codons with this gene, which result in two forms of the protein. An allele mutation and a low-frequency noncoding single-nucleotide polymorphism (SNP) in this gene cause thrombocytopenia-absent radius (TAR) syndrome. [provided by RefSeq, Jul 2013]

Synonyms:

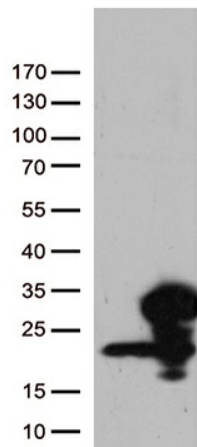
BOV-1A; BOV-1B; BOV-1C; C1DELq21.1; DEL1q21.1; MDS014; RBM8; RBM8B; TAR; Y14; ZNRP; ZRNP1

Protein Families:

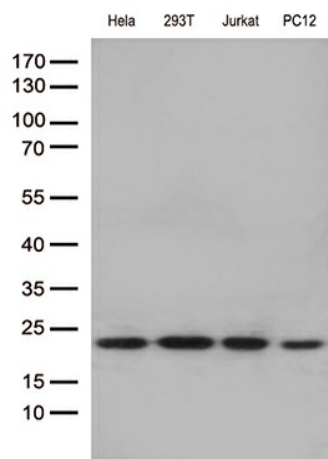
Druggable Genome

Protein Pathways:

Spliceosome

Product images:

HEK293T cells were transfected with the pCMV6-ENTRY control (Cat# [PS100001], Left lane) or pCMV6-ENTRY RBM8A (Cat# [RC209770], Right lane) cDNA for 48 hrs and lysed. Equivalent amounts of cell lysates (5 ug per lane) were separated by SDS-PAGE and immunoblotted with anti-RBM8A (Cat# TA812498)(1:500). Positive lysates [LY417520] (100ug) and [LC417520] (20ug) can be purchased separately from OriGene.



Western blot analysis of extracts (35ug) from 4 cell lines lysates by using anti-RBM8A monoclonal antibody (1:250).