

## Product datasheet for **TA812468S**

### HB EGF (HBEGF) Mouse Monoclonal Antibody [Clone ID: OTI8B5]

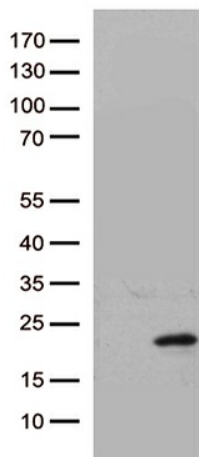
#### Product data:

Product Type:	Primary Antibodies
Clone Name:	OTI8B5
Applications:	WB
Recommended Dilution:	WB 1:2000
Reactivity:	Human
Host:	Mouse
Isotype:	IgG1
Clonality:	Monoclonal
Immunogen:	Human recombinant protein fragment corresponding to amino acids 20-208 of human HBEGF (NP_001936) produced in E.coli.
Formulation:	PBS (pH 7.3) containing 1% BSA, 50% glycerol and 0.02% sodium azide.
Concentration:	1 mg/ml
Purification:	Purified from mouse ascites fluids or tissue culture supernatant by affinity chromatography (protein A/G)
Conjugation:	Unconjugated
Storage:	Store at -20°C as received.
Stability:	Stable for 12 months from date of receipt.
Predicted Protein Size:	22.9 kDa
Gene Name:	heparin binding EGF like growth factor
Database Link:	<a href="#">NP_001936</a> <a href="#">Entrez Gene 1839 Human</a> <a href="#">Q99075</a>
Background:	Growth factor that mediates its effects via EGFR, ERBB2 and ERBB4. Required for normal cardiac valve formation and normal heart function. Promotes smooth muscle cell proliferation. May be involved in macrophage-mediated cellular proliferation. It is mitogenic for fibroblasts, but not endothelial cells. It is able to bind EGF receptor/EGFR with higher affinity than EGF itself and is a far more potent mitogen for smooth muscle cells than EGF. Also acts as a diphtheria toxin receptor. [UniProtKB/Swiss-Prot Function]



[View online »](#)

<b>Synonyms:</b>	DTR; DTS; DTSF; HEGFL
<b>Protein Families:</b>	Druggable Genome, Secreted Protein, Transmembrane
<b>Protein Pathways:</b>	Epithelial cell signaling in Helicobacter pylori infection, ErbB signaling pathway, GnRH signaling pathway

**Product images:**

HEK293T cells were transfected with the pCMV6-ENTRY control (Cat# [PS100001], Left lane) or pCMV6-ENTRY HBEGF (Cat# [RC207688], Right lane) cDNA for 48 hrs and lysed. Equivalent amounts of cell lysates (5 ug per lane) were separated by SDS-PAGE and immunoblotted with anti-HBEGF (Cat# [TA812468])(1:2000). Positive lysates [LY400718] (100ug) and [LC400718] (20ug) can be purchased separately from OriGene.