

Product datasheet for **TA812457M**

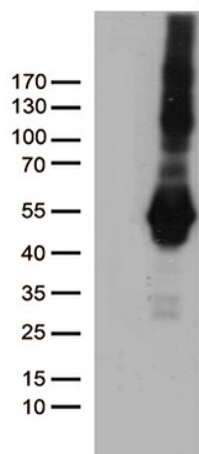
MGC13096 (PDCD2L) Mouse Monoclonal Antibody [Clone ID: OTI4H4]

Product data:

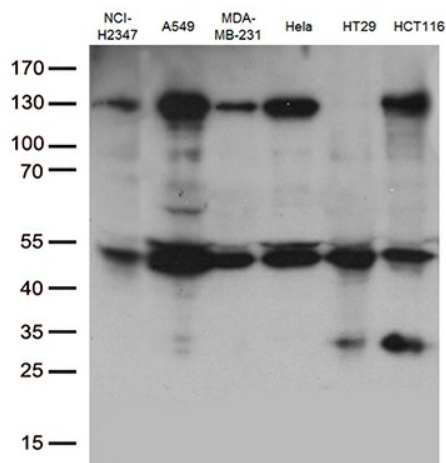
Product Type:	Primary Antibodies
Clone Name:	OTI4H4
Applications:	WB
Recommended Dilution:	WB 1:500
Reactivity:	Human
Host:	Mouse
Isotype:	IgG2b
Clonality:	Monoclonal
Immunogen:	Full length human recombinant protein of human PDCD2L (NP_115722) produced in HEK293T cell.
Formulation:	PBS (pH 7.3) containing 1% BSA, 50% glycerol and 0.02% sodium azide.
Concentration:	1 mg/ml
Purification:	Purified from mouse ascites fluids or tissue culture supernatant by affinity chromatography (protein A/G)
Conjugation:	Unconjugated
Storage:	Store at -20°C as received.
Stability:	Stable for 12 months from date of receipt.
Predicted Protein Size:	39.2 kDa
Gene Name:	programmed cell death 2-like
Database Link:	NP_115722 Entrez Gene 84306 Human Q9BRP1

[View online »](#)

Product images:



HEK293T cells were transfected with the pCMV6-ENTRY control (Left lane) or pCMV6-ENTRY PDCD2L ([RC202997], Right lane) cDNA for 48 hrs and lysed. Equivalent amounts of cell lysates (5 ug per lane) were separated by SDS-PAGE and immunoblotted with anti-PDCD2L (1:500). Positive lysates [LY410183] (100ug) and [LC410183] (20ug) can be purchased separately from OriGene.



Western blot analysis of extracts (35ug) from 6 cell lines lysates by using anti-PDCD2L monoclonal antibody (1:500).