

## Product datasheet for **TA812448**

### UBE2NL Mouse Monoclonal Antibody [Clone ID: OTI8E6]

#### Product data:

Product Type:	Primary Antibodies
Clone Name:	OTI8E6
Applications:	WB
Recommended Dilution:	WB 1:500
Reactivity:	Human
Host:	Mouse
Isotype:	IgG1
Clonality:	Monoclonal
Immunogen:	Human recombinant protein fragment corresponding to amino acids 1-100 of human UBE2NL (NP_001013007) produced in E.coli.
Formulation:	PBS (pH 7.3) containing 1% BSA, 50% glycerol and 0.02% sodium azide.
Concentration:	1 mg/ml
Purification:	Purified from mouse ascites fluids or tissue culture supernatant by affinity chromatography (protein A/G)
Conjugation:	Unconjugated
Storage:	Store at -20°C as received.
Stability:	Stable for 12 months from date of receipt.
Predicted Protein Size:	17.2 kDa
Gene Name:	ubiquitin conjugating enzyme E2 N like (gene/pseudogene)
Database Link:	<a href="#">NP_001013007</a> <a href="#">Entrez Gene 389898 Human</a> <a href="#">Q5JXB2</a>
Background:	This gene is intronless and encodes a member of the ubiquitin-conjugating enzyme family. The protein product is 91% identical to ubiquitin-conjugating enzyme E2N, a multi-exon gene product. This locus represents a polymorphic pseudogene, where some individuals contain an allele that can encode a full-length protein, while others have a non-functional allele containing a premature stop codon (reference SNP rs237520) that truncates the coding sequence. [provided by RefSeq, Jun 2014]

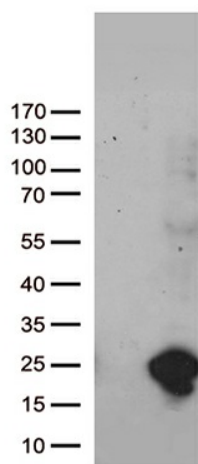


[View online »](#)

Synonyms: Li174

Protein Pathways: Ubiquitin mediated proteolysis

### Product images:



HEK293T cells were transfected with the pCMV6-ENTRY control (Cat# [PS100001], Left lane) or pCMV6-ENTRY UBE2NL (Cat# [RC215865], Right lane) cDNA for 48 hrs and lysed. Equivalent amounts of cell lysates (5 ug per lane) were separated by SDS-PAGE and immunoblotted with anti-UBE2NL (Cat# TA812448)(1:500). Positive lysates [LY422948] (100ug) and [LC422948] (20ug) can be purchased separately from OriGene.