

## Product datasheet for **TA812439BM**

### GPC1 Mouse Monoclonal Antibody (HRP conjugated) [Clone ID: OTI8F3]

#### Product data:

Product Type:	Primary Antibodies
Clone Name:	OTI8F3
Applications:	WB
Recommended Dilution:	WB 1:500
Reactivity:	Human, Mouse, Rat
Host:	Mouse
Isotype:	IgG1
Clonality:	Monoclonal
Immunogen:	Human recombinant protein fragment corresponding to amino acids 24-530 of human GPC1 (NP_002072) produced in HEK293T cell.
Formulation:	PBS (pH 7.3) containing 1% BSA, 50% glycerol.
Concentration:	0.5 mg/ml
Purification:	Purified from mouse ascites fluids or tissue culture supernatant by affinity chromatography (protein A/G)
Conjugation:	HRP
Storage:	Store at -20°C as received.
Stability:	Stable for 12 months from date of receipt.
Predicted Protein Size:	61.5 kDa
Gene Name:	glypican 1
Database Link:	<a href="#">NP_002072</a> <a href="#">Entrez Gene 14733 Mouse</a> <a href="#">Entrez Gene 58920 Rat</a> <a href="#">Entrez Gene 2817 Human</a> <a href="#">P35052</a>
Background:	Cell surface heparan sulfate proteoglycans are composed of a membrane-associated protein core substituted with a variable number of heparan sulfate chains. Members of the glypican-related integral membrane proteoglycan family (GRIPS) contain a core protein anchored to the cytoplasmic membrane via a glycosyl phosphatidylinositol linkage. These proteins may play a role in the control of cell division and growth regulation. [provided by RefSeq, Jul 2008]

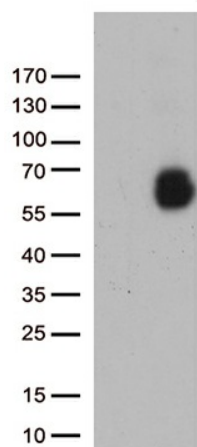


[View online »](#)

Synonyms: glypican

Protein Families: Druggable Genome

### Product images:



HEK293T cells were transfected with the pCMV6-ENTRY control (Cat# [PS100001], Left lane) or pCMV6-ENTRY GPC1 (Cat# [RC208602], Right lane) cDNA for 48 hrs and lysed. Equivalent amounts of cell lysates (5 ug per lane) were separated by SDS-PAGE and immunoblotted with anti-GPC1 (Cat# [TA812439])(1:500).