

Product datasheet for **TA812395S**

gamma Catenin (JUP) Mouse Monoclonal Antibody [Clone ID: OTI1B4]

Product data:

Product Type:	Primary Antibodies
Clone Name:	OTI1B4
Applications:	IHC
Recommended Dilution:	IHC 1:2000
Reactivity:	Human, Mouse, Rat
Host:	Mouse
Isotype:	IgG1
Clonality:	Monoclonal
Immunogen:	Human recombinant protein fragment corresponding to amino acids 500-745 of human JUP (NP_002221) produced in E.coli.
Formulation:	PBS (pH 7.3) containing 1% BSA, 50% glycerol and 0.02% sodium azide.
Concentration:	1 mg/ml
Purification:	Purified from mouse ascites fluids or tissue culture supernatant by affinity chromatography (protein A/G)
Conjugation:	Unconjugated
Storage:	Store at -20°C as received.
Stability:	Stable for 12 months from date of receipt.
Predicted Protein Size:	81.6 kDa
Gene Name:	junction plakoglobin
Database Link:	NP_002221 Entrez Gene 16480 Mouse Entrez Gene 81679 Rat Entrez Gene 3728 Human P14923



[View online »](#)

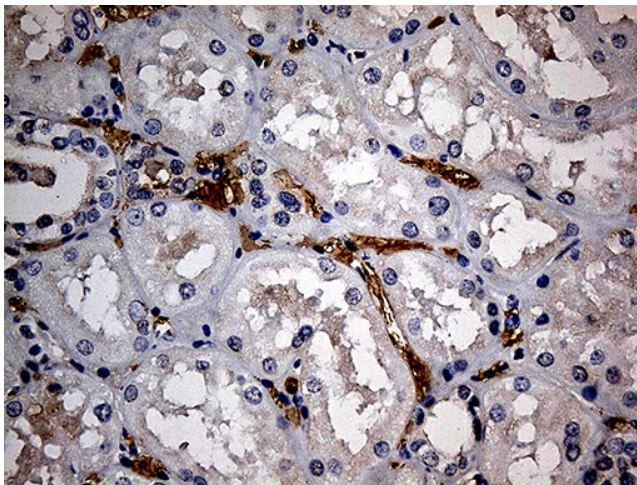
Background: This gene encodes a major cytoplasmic protein which is the only known constituent common to submembranous plaques of both desmosomes and intermediate junctions. This protein forms distinct complexes with cadherins and desmosomal cadherins and is a member of the catenin family since it contains a distinct repeating amino acid motif called the armadillo repeat. Mutation in this gene has been associated with Naxos disease. Alternative splicing occurs in this gene; however, not all transcripts have been fully described. [provided by RefSeq, Jul 2008]

Synonyms: CTNNG; DP3; DP11; PDGB; PG; PKGB

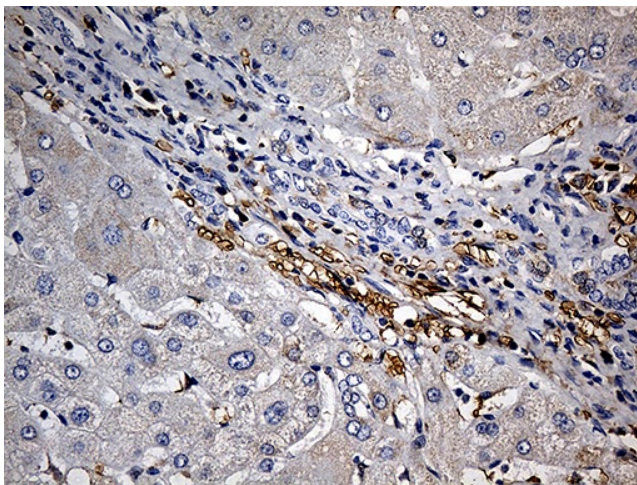
Protein Families: Druggable Genome

Protein Pathways: Acute myeloid leukemia, Arrhythmogenic right ventricular cardiomyopathy (ARVC), Pathways in cancer

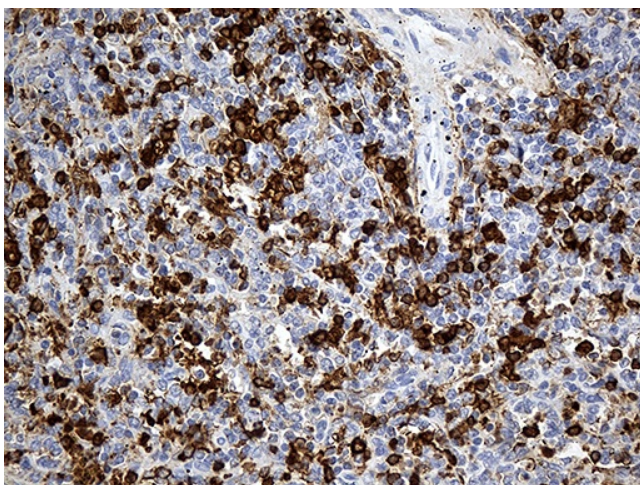
Product images:



Immunohistochemical staining of paraffin-embedded Human Kidney tissue within the normal limits using anti-JUP mouse monoclonal antibody. (Heat-induced epitope retrieval by 1mM EDTA in 10mM Tris buffer (pH8.5) at 120°C for 3min, [TA812395]) (1:2000)



Immunohistochemical staining of paraffin-embedded Human liver tissue within the normal limits using anti-JUP mouse monoclonal antibody. (Heat-induced epitope retrieval by 1mM EDTA in 10mM Tris buffer (pH8.5) at 120°C for 3min, [TA812395]) (1:2000)



Immunohistochemical staining of paraffin-embedded Human spleen tissue within the normal limits using anti-JUP mouse monoclonal antibody. (Heat-induced epitope retrieval by 1mM EDTA in 10mM Tris buffer (pH8.5) at 120°C for 3min, [TA812395]) (1:2000)