

Product datasheet for **TA812375**

CD94 (KLRD1) Mouse Monoclonal Antibody [Clone ID: OTI8E10]

Product data:

| | |
|-------------------------|--|
| Product Type: | Primary Antibodies |
| Clone Name: | OTI8E10 |
| Applications: | FC |
| Recommended Dilution: | FLOW 1:100 |
| Reactivity: | Human |
| Host: | Mouse |
| Isotype: | IgG1 |
| Clonality: | Monoclonal |
| Immunogen: | Human recombinant protein fragment corresponding to amino acids 32-179+Mouse FC of human KLRD1 (NP_002253) produced in HEK293T cell. |
| Formulation: | PBS (pH 7.3) containing 1% BSA, 50% glycerol and 0.02% sodium azide. |
| Concentration: | 1 mg/ml |
| Purification: | Purified from mouse ascites fluids or tissue culture supernatant by affinity chromatography (protein A/G) |
| Conjugation: | Unconjugated |
| Storage: | Store at -20°C as received. |
| Stability: | Stable for 12 months from date of receipt. |
| Predicted Protein Size: | 20.3 kDa |
| Gene Name: | killer cell lectin like receptor D1 |
| Database Link: | NP_002253 Entrez Gene 3824 Human Q13241 |



[View online »](#)

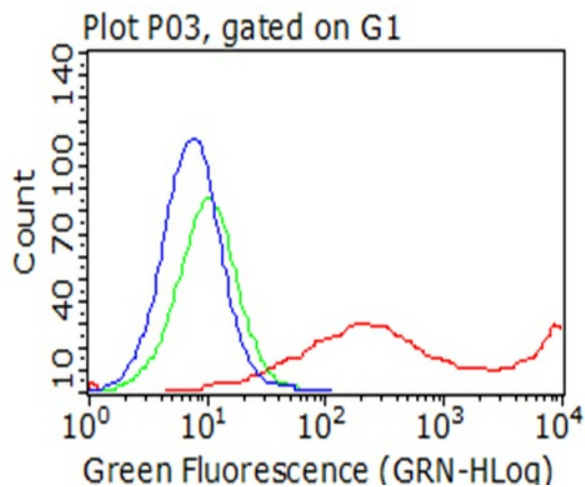
Background: Natural killer (NK) cells are a distinct lineage of lymphocytes that mediate cytotoxic activity and secrete cytokines upon immune stimulation. Several genes of the C-type lectin superfamily, including members of the NKG2 family, are expressed by NK cells and may be involved in the regulation of NK cell function. KLRD1 (CD94) is an antigen preferentially expressed on NK cells and is classified as a type II membrane protein because it has an external C terminus. Three transcript variants encoding two different isoforms have been found for this gene. [provided by RefSeq, Jul 2008]

Synonyms: CD94

Protein Families: Transmembrane

Protein Pathways: Antigen processing and presentation, Graft-versus-host disease, Natural killer cell mediated cytotoxicity

Product images:



Flow cytometric analysis of living 293T cells transfected with KLRD1 overexpression plasmid ([RC206991], Red)/empty vector ([PS100001], Blue) using anti-KLRD1 antibody (TA812375). Cells incubated with a non-specific antibody (Green) were used as isotype control (1:100).