

## Product datasheet for **TA812352**

### CDC25B Mouse Monoclonal Antibody [Clone ID: OTI6H9]

#### Product data:

Product Type:	Primary Antibodies
Clone Name:	OTI6H9
Applications:	WB
Recommended Dilution:	WB 1:2000
Reactivity:	Human
Host:	Mouse
Isotype:	IgG2b
Clonality:	Monoclonal
Immunogen:	Human recombinant protein fragment corresponding to amino acids 421-567 of human CDC25B (NP_004349) produced in E.coli.
Formulation:	PBS (pH 7.3) containing 1% BSA, 50% glycerol and 0.02% sodium azide.
Concentration:	1 mg/ml
Purification:	Purified from mouse ascites fluids or tissue culture supernatant by affinity chromatography (protein A/G)
Conjugation:	Unconjugated
Storage:	Store at -20°C as received.
Stability:	Stable for 12 months from date of receipt.
Gene Name:	cell division cycle 25B
Database Link:	<a href="#">NP_004349</a> <a href="#">Entrez Gene 994 Human</a> <a href="#">P30305</a>
Background:	CDC25B is a member of the CDC25 family of phosphatases. CDC25B activates the cyclin dependent kinase CDC2 by removing two phosphate groups and it is required for entry into mitosis. CDC25B shuttles between the nucleus and the cytoplasm due to nuclear localization and nuclear export signals. The protein is nuclear in the M and G1 phases of the cell cycle and moves to the cytoplasm during S and G2. CDC25B has oncogenic properties, although its role in tumor formation has not been determined. Multiple transcript variants for this gene exist. [provided by RefSeq, Jul 2008]

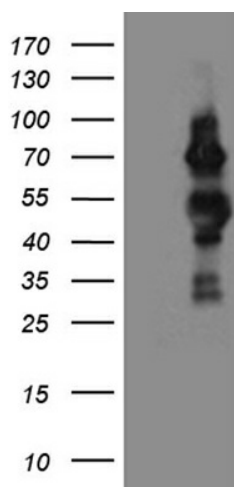


[View online »](#)

**Protein Families:** Druggable Genome, Phosphatase

**Protein Pathways:** Cell cycle, MAPK signaling pathway, Progesterone-mediated oocyte maturation

**Product images:**



HEK293T cells were transfected with the pCMV6-ENTRY control (Cat# [PS100001], Left lane) or pCMV6-ENTRY CDC25B (Cat# [RC207409], Right lane) cDNA for 48 hrs and lysed. Equivalent amounts of cell lysates (5 ug per lane) were separated by SDS-PAGE and immunoblotted with anti-CDC25B (Cat# TA812352)(1:2000).