

Product datasheet for **TA812351AM**

GRB10 Mouse Monoclonal Antibody (Biotin conjugated) [Clone ID: OTI6G1]

Product data:

Product Type:	Primary Antibodies
Clone Name:	OTI6G1
Applications:	WB
Recommended Dilution:	WB 1:500
Reactivity:	Human, Mouse, Rat
Host:	Mouse
Isotype:	IgG1
Clonality:	Monoclonal
Immunogen:	Human recombinant protein fragment corresponding to amino acids 164-415 of human GRB10 (NP_005302) produced in E.coli.
Formulation:	PBS (pH 7.3) containing 1% BSA, 50% glycerol and 0.02% sodium azide.
Concentration:	0.5 mg/ml
Purification:	Purified from mouse ascites fluids or tissue culture supernatant by affinity chromatography (protein A/G)
Conjugation:	Biotin
Storage:	Store at -20°C as received.
Stability:	Stable for 12 months from date of receipt.
Predicted Protein Size:	67.1 kDa
Gene Name:	growth factor receptor bound protein 10
Database Link:	NP_005302 Entrez Gene 14783 Mouse Entrez Gene 498416 Rat Entrez Gene 2887 Human Q13322



[View online »](#)

Background:

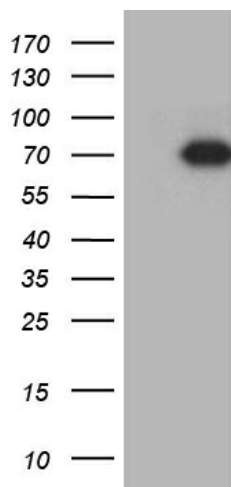
The product of this gene belongs to a small family of adapter proteins that are known to interact with a number of receptor tyrosine kinases and signaling molecules. This gene encodes a growth factor receptor-binding protein that interacts with insulin receptors and insulin-like growth-factor receptors. Overexpression of some isoforms of the encoded protein inhibits tyrosine kinase activity and results in growth suppression. This gene is imprinted in a highly isoform- and tissue-specific manner, with expression observed from the paternal allele in the brain, and from the maternal allele in the placental trophoblasts. Alternatively spliced transcript variants encoding different isoforms have been identified. [provided by RefSeq, Oct 2010]

Synonyms:

Grb-10; GRB-IR; IRBP; MEG1; RSS

Protein Families:

Druggable Genome

Product images:

HEK293T cells were transfected with the pCMV6-ENTRY control (Left lane) or pCMV6-ENTRY GRB10 ([RC220715], Right lane) cDNA for 48 hrs and lysed. Equivalent amounts of cell lysates (5 ug per lane) were separated by SDS-PAGE and immunoblotted with anti-GRB10. Positive lysates [LY417385] (100ug) and [LC417385] (20ug) can be purchased separately from OriGene.