

Product datasheet for **TA812347M**

CRLF3 Mouse Monoclonal Antibody [Clone ID: OTI2A9]

Product data:

Product Type:	Primary Antibodies
Clone Name:	OTI2A9
Applications:	IHC, WB
Recommended Dilution:	WB 1:500, IHC 1:2000
Reactivity:	Human, Mouse, Rat
Host:	Mouse
Isotype:	IgG1
Clonality:	Monoclonal
Immunogen:	Full length human recombinant protein of human CRLF3 (NP_057070) produced in HEK293T cell.
Formulation:	PBS (pH 7.3) containing 1% BSA, 50% glycerol and 0.02% sodium azide.
Concentration:	1 mg/ml
Purification:	Purified from mouse ascites fluids or tissue culture supernatant by affinity chromatography (protein A/G)
Conjugation:	Unconjugated
Storage:	Store at -20°C as received.
Stability:	Stable for 12 months from date of receipt.
Predicted Protein Size:	49.6 kDa
Gene Name:	cytokine receptor like factor 3
Database Link:	NP_057070 Entrez Gene 51379 Human Q8IU18



[View online »](#)

Background:

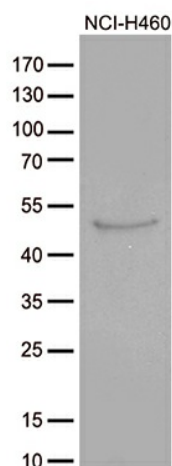
This gene encodes a cytokine receptor-like factor that may negatively regulate cell cycle progression at the G0/G1 phase. Studies of the related rat protein suggest that it may regulate neuronal morphology and synaptic vesicle biogenesis. This gene is one of several genes located in the neurofibromatosis type I tumor suppressor region on the q arm of chromosome 17, a region that is subject to microdeletions, duplications, chromosomal breaks and rearrangements. Alternative splicing of this gene results in multiple transcript variants. Related pseudogenes have been identified on chromosomes 2 and 5. [provided by RefSeq, Aug 2012]

Synonyms:

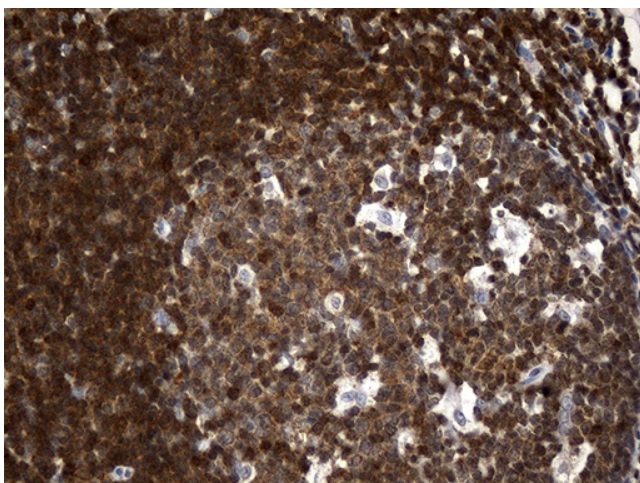
CREME-9; CREME9; CRLM9; CYTOR4; FRWS; p48.2

Protein Families:

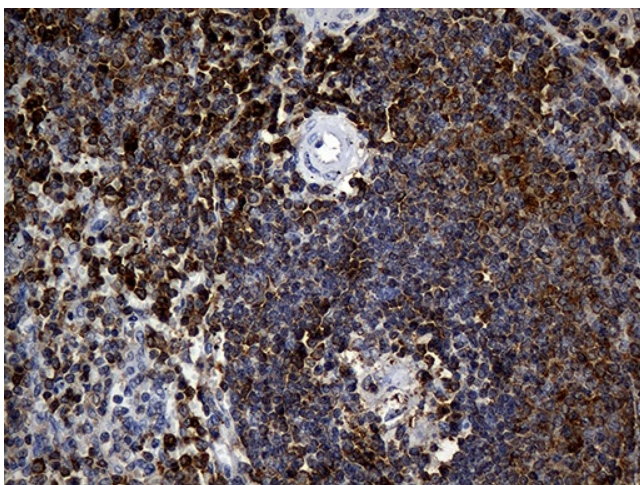
Druggable Genome

Product images:


Western blot analysis of extracts (35ug) from cell line by using anti-CRLF3 monoclonal antibody (1:500).



Immunohistochemical staining of paraffin-embedded Human tonsil within the normal limits using anti-CRLF3 mouse monoclonal antibody. Heat-induced epitope retrieval by EDTA solution buffer pH 8.0 at 120°C for 3 min.



Immunohistochemical staining of paraffin-embedded Human spleen tissue within the normal limits using anti-CRLF3 mouse monoclonal antibody. Heat-induced epitope retrieval by EDTA solution buffer pH 8.0 at 120°C for 3 min.