

## Product datasheet for **TA812338BM**

### **RGS10 Mouse Monoclonal Antibody (HRP conjugated) [Clone ID: OTI8H4]**

#### **Product data:**

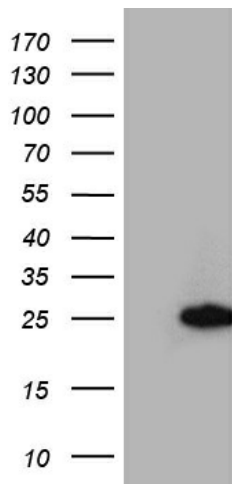
|                         |  |
|-------------------------|--|
| Product Type:           | Primary Antibodies   |
| Clone Name:             | OTI8H4   |
| Applications:           | WB   |
| Recommended Dilution:   | WB 1:500   |
| Reactivity:             | Human, Mouse, Rat  |
| Host:                   | Mouse  |
| Isotype:                | IgG1   |
| Clonality:              | Monoclonal   |
| Immunogen:              | Full length human recombinant protein of human RGS10 (NP_001005339) produced in HEK293T cell.  |
| Formulation:            | PBS (pH 7.3) containing 1% BSA, 50% glycerol.  |
| Concentration:          | 0.5 mg/ml  |
| Purification:           | Purified from mouse ascites fluids or tissue culture supernatant by affinity chromatography (protein A/G)  |
| Conjugation:            | HRP  |
| Storage:                | Store at -20°C as received.  |
| Stability:              | Stable for 12 months from date of receipt.   |
| Predicted Protein Size: | 21 kDa   |
| Gene Name:              | regulator of G-protein signaling 10  |
| Database Link:          | <a href="#">NP_001005339</a><br><a href="#">Entrez Gene 54290 Rat</a> <a href="#">Entrez Gene 67865 Mouse</a> <a href="#">Entrez Gene 6001 Human</a><br><a href="#">O43665</a> |



[View online »](#)

**Background:**

Regulator of G protein signaling (RGS) family members are regulatory molecules that act as GTPase activating proteins (GAPs) for G alpha subunits of heterotrimeric G proteins. RGS proteins are able to deactivate G protein subunits of the Gi alpha, Go alpha and Gq alpha subtypes. They drive G proteins into their inactive GDP-bound forms. Regulator of G protein signaling 10 belongs to this family. All RGS proteins share a conserved 120-amino acid sequence termed the RGS domain. This protein associates specifically with the activated forms of the two related G-protein subunits, G-alpha<sub>i3</sub> and G-alpha<sub>z</sub> but fails to interact with the structurally and functionally distinct G-alpha subunits. Regulator of G protein signaling 10 protein is localized in the nucleus. Two transcript variants encoding different isoforms have been found for this gene. [provided by RefSeq, Jul 2008]

**Product images:**

HEK293T cells were transfected with the pCMV6-ENTRY control (Left lane) or pCMV6-ENTRY RGS10 ([RC203488], Right lane) cDNA for 48 hrs and lysed. Equivalent amounts of cell lysates (5 ug per lane) were separated by SDS-PAGE and immunoblotted with anti-RGS10. Positive lysates [LY423865] (100ug) and [LC423865] (20ug) can be purchased separately from OriGene.