

Product datasheet for **TA812316S**

Mutarotase (GALM) Mouse Monoclonal Antibody [Clone ID: OTI2F8]

Product data:

Product Type:	Primary Antibodies
Clone Name:	OTI2F8
Applications:	IHC, WB
Recommended Dilution:	WB 1:500~2000, IHC 1:500
Reactivity:	Human, Mouse, Rat
Host:	Mouse
Isotype:	IgG1
Clonality:	Monoclonal
Immunogen:	Full length human recombinant protein of human GALM (NP_620156) produced in HEK293T cell.
Formulation:	PBS (pH 7.3) containing 1% BSA, 50% glycerol and 0.02% sodium azide.
Concentration:	1 mg/ml
Purification:	Purified from mouse ascites fluids or tissue culture supernatant by affinity chromatography (protein A/G)
Conjugation:	Unconjugated
Storage:	Store at -20°C as received.
Stability:	Stable for 12 months from date of receipt.
Predicted Protein Size:	37.6 kDa
Gene Name:	galactose mutarotase
Database Link:	NP_620156 Entrez Gene 313843 Rat Entrez Gene 319625 Mouse Entrez Gene 130589 Human Q96C23
Background:	This gene encodes an enzyme that catalyzes the epimerization of hexose sugars such as glucose and galactose. The encoded protein is expressed in the cytoplasm and has a preference for galactose. The encoded protein may be required for normal galactose metabolism by maintaining the equilibrium of alpha and beta anomers of galactose. [provided by RefSeq, Mar 2009]

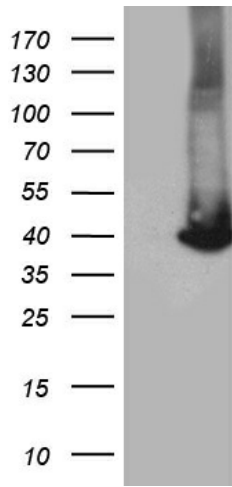


[View online »](#)

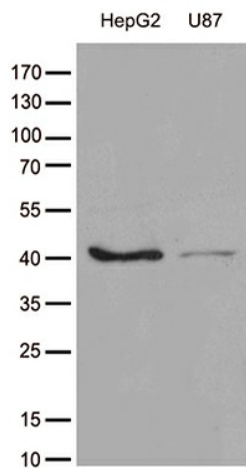
Synonyms: BLOCK25; GALAC4; GLAT; HEL-S-63p; IBD1

Protein Pathways: Glycolysis / Gluconeogenesis

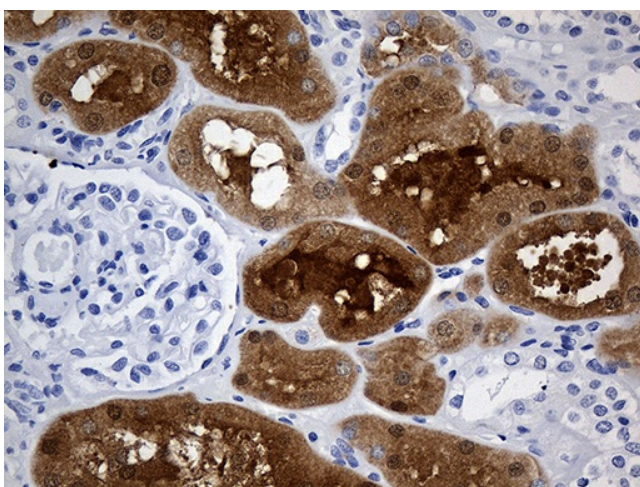
Product images:



HEK293T cells were transfected with the pCMV6-ENTRY control (Cat# [PS100001], Left lane) or pCMV6-ENTRY GALM (Cat# [RC200995], Right lane) cDNA for 48 hrs and lysed. Equivalent amounts of cell lysates (5 ug per lane) were separated by SDS-PAGE and immunoblotted with anti-GALM(Cat# [TA812316]). Positive lysates [LY408487] (100ug) and [LC408487] (20ug) can be purchased separately from OriGene.



Western blot analysis of extracts (35ug) from cell lines by using anti-GALM monoclonal antibody (1:500).



Immunohistochemical staining of paraffin-embedded Human Kidney tissue within the normal limits using anti-GALM mouse monoclonal antibody. (Heat-induced epitope retrieval by 1mM EDTA in 10mM Tris buffer (pH8.5) at 120°C for 3min, [TA812316]) (1:500)