

## Product datasheet for **TA812313BM**

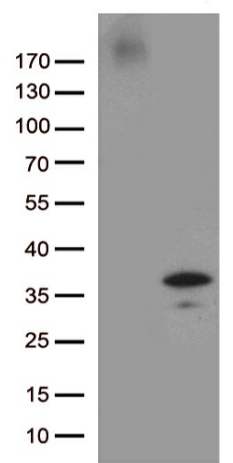
### GRPEL1 Mouse Monoclonal Antibody (HRP conjugated) [Clone ID: OTI6G6]

#### Product data:

|                         |   |
|-------------------------|---|
| Product Type:           | Primary Antibodies  |
| Clone Name:             | OTI6G6  |
| Applications:           | WB  |
| Recommended Dilution:   | WB 1:2000   |
| Reactivity:             | Human, Mouse, Rat   |
| Host:                   | Mouse   |
| Isotype:                | IgG1  |
| Clonality:              | Monoclonal  |
| Immunogen:              | Human recombinant protein fragment corresponding to amino acids 28-217 of human GRPEL1 (NP_079472) produced in E.coli.  |
| Formulation:            | PBS (pH 7.3) containing 1% BSA, 50% glycerol.   |
| Concentration:          | 0.5 mg/ml   |
| Purification:           | Purified from mouse ascites fluids or tissue culture supernatant by affinity chromatography (protein A/G)   |
| Conjugation:            | HRP   |
| Storage:                | Store at -20°C as received.   |
| Stability:              | Stable for 12 months from date of receipt.  |
| Predicted Protein Size: | 24.1 kDa  |
| Gene Name:              | GrpE like 1, mitochondrial  |
| Database Link:          | <a href="#">NP_079472</a><br><a href="#">Entrez Gene 80273 Human</a><br><a href="#">Q9HAV7</a>  |
| Background:             | Essential component of the PAM complex, a complex required for the translocation of transit peptide-containing proteins from the inner membrane into the mitochondrial matrix in an ATP-dependent manner. Seems to control the nucleotide-dependent binding of mitochondrial HSP70 to substrate proteins. [UniProtKB/Swiss-Prot Function] |
| Synonyms:               | GrpE; HMGE; mt-GrpE#1   |



[View online »](#)

**Product images:**

HEK293T cells were transfected with the pCMV6-ENTRY control (Cat# [PS100001], Left lane) or pCMV6-ENTRY GRPEL1 (Cat# [RC206086], Right lane) cDNA for 48 hrs and lysed. Equivalent amounts of cell lysates (5 ug per lane) were separated by SDS-PAGE and immunoblotted with anti-GRPEL1 antibody (Cat# [TA812313]). Positive lysates [LY410847] (100ug) and [LC410847] (20ug) can be purchased separately from OriGene.