

## Product datasheet for **TA812313AM**

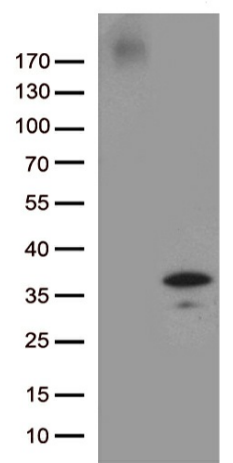
### GRPEL1 Mouse Monoclonal Antibody (Biotin conjugated) [Clone ID: OTI6G6]

#### Product data:

Product Type:	Primary Antibodies
Clone Name:	OTI6G6
Applications:	WB
Recommended Dilution:	WB 1:2000
Reactivity:	Human, Mouse, Rat
Host:	Mouse
Isotype:	IgG1
Clonality:	Monoclonal
Immunogen:	Human recombinant protein fragment corresponding to amino acids 28-217 of human GRPEL1 (NP_079472) produced in E.coli.
Formulation:	PBS (pH 7.3) containing 1% BSA, 50% glycerol and 0.02% sodium azide.
Concentration:	0.5 mg/ml
Purification:	Purified from mouse ascites fluids or tissue culture supernatant by affinity chromatography (protein A/G)
Conjugation:	Biotin
Storage:	Store at -20°C as received.
Stability:	Stable for 12 months from date of receipt.
Predicted Protein Size:	24.1 kDa
Gene Name:	GrpE like 1, mitochondrial
Database Link:	<a href="#">NP_079472</a> <a href="#">Entrez Gene 80273 Human</a> <a href="#">Q9HAV7</a>
Background:	Essential component of the PAM complex, a complex required for the translocation of transit peptide-containing proteins from the inner membrane into the mitochondrial matrix in an ATP-dependent manner. Seems to control the nucleotide-dependent binding of mitochondrial HSP70 to substrate proteins. [UniProtKB/Swiss-Prot Function]
Synonyms:	GrpE; HMGE; mt-GrpE#1



[View online »](#)

**Product images:**

HEK293T cells were transfected with the pCMV6-ENTRY control (Cat# [PS100001], Left lane) or pCMV6-ENTRY GRPEL1 (Cat# [RC206086], Right lane) cDNA for 48 hrs and lysed. Equivalent amounts of cell lysates (5 ug per lane) were separated by SDS-PAGE and immunoblotted with anti-GRPEL1 antibody (Cat# [TA812313]). Positive lysates [LY410847] (100ug) and [LC410847] (20ug) can be purchased separately from OriGene.