

## Product datasheet for TA812311

### Mutarotase (GALM) Mouse Monoclonal Antibody [Clone ID: OTI10B3]

#### Product data:

Product Type:	Primary Antibodies
Clone Name:	OTI10B3
Applications:	WB
Recommended Dilution:	WB 1:500~2000
Reactivity:	Human, Mouse, Rat
Host:	Mouse
Isotype:	IgG1
Clonality:	Monoclonal
Immunogen:	Full length human recombinant protein of human GALM (NP_620156) produced in HEK293T cell.
Formulation:	PBS (pH 7.3) containing 1% BSA, 50% glycerol and 0.02% sodium azide.
Concentration:	1 mg/ml
Purification:	Purified from mouse ascites fluids or tissue culture supernatant by affinity chromatography (protein A/G)
Conjugation:	Unconjugated
Storage:	Store at -20°C as received.
Stability:	Stable for 12 months from date of receipt.
Predicted Protein Size:	37.6 kDa
Gene Name:	galactose mutarotase
Database Link:	<a href="#">NP_620156</a> <a href="#">Entrez Gene 313843 Rat</a> <a href="#">Entrez Gene 319625 Mouse</a> <a href="#">Entrez Gene 130589 Human</a> <a href="#">Q96C23</a>
Background:	This gene encodes an enzyme that catalyzes the epimerization of hexose sugars such as glucose and galactose. The encoded protein is expressed in the cytoplasm and has a preference for galactose. The encoded protein may be required for normal galactose metabolism by maintaining the equilibrium of alpha and beta anomers of galactose. [provided by RefSeq, Mar 2009]

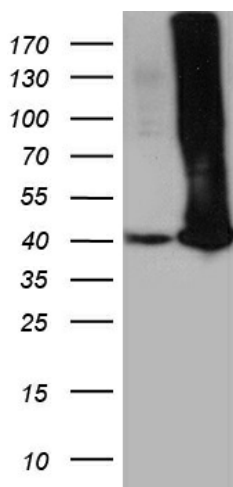


[View online »](#)

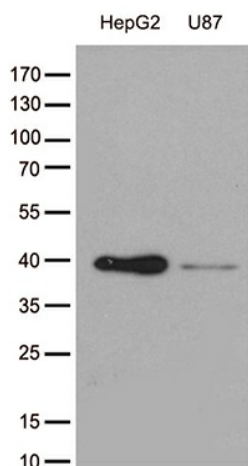
**Synonyms:** BLOCK25; GALAC4; GLAT; HEL-S-63p; IBD1

**Protein Pathways:** Glycolysis / Gluconeogenesis

**Product images:**



HEK293T cells were transfected with the pCMV6-ENTRY control (Left lane) or pCMV6-ENTRY GALM ([RC200995], Right lane) cDNA for 48 hrs and lysed. Equivalent amounts of cell lysates (5 ug per lane) were separated by SDS-PAGE and immunoblotted with anti-GALM. Positive lysates [LY408487] (100ug) and [LC408487] (20ug) can be purchased separately from OriGene.



Western blot analysis of extracts (35ug) from cell lines by using anti-GALM monoclonal antibody (1:500).