

Product datasheet for **TA812300AM**

Mutarotase (GALM) Mouse Monoclonal Antibody (Biotin conjugated) [Clone ID: OTI4F4]

Product data:

| | |
|-------------------------|--|
| Product Type: | Primary Antibodies |
| Clone Name: | OTI4F4 |
| Applications: | IHC, WB |
| Recommended Dilution: | WB 1:500~2000, IHC 1:2000 |
| Reactivity: | Human, Mouse, Rat |
| Host: | Mouse |
| Isotype: | IgG1 |
| Clonality: | Monoclonal |
| Immunogen: | Full length human recombinant protein of human GALM (NP_620156) produced in HEK293T cell. |
| Formulation: | PBS (pH 7.3) containing 1% BSA, 50% glycerol and 0.02% sodium azide. |
| Concentration: | 0.5 mg/ml |
| Purification: | Purified from mouse ascites fluids or tissue culture supernatant by affinity chromatography (protein A/G) |
| Conjugation: | Biotin |
| Storage: | Store at -20°C as received. |
| Stability: | Stable for 12 months from date of receipt. |
| Predicted Protein Size: | 37.6 kDa |
| Gene Name: | galactose mutarotase |
| Database Link: | NP_620156 Entrez Gene 313843 Rat Entrez Gene 319625 Mouse Entrez Gene 130589 Human Q96C23 |
| Background: | This gene encodes an enzyme that catalyzes the epimerization of hexose sugars such as glucose and galactose. The encoded protein is expressed in the cytoplasm and has a preference for galactose. The encoded protein may be required for normal galactose metabolism by maintaining the equilibrium of alpha and beta anomers of galactose. [provided by RefSeq, Mar 2009] |

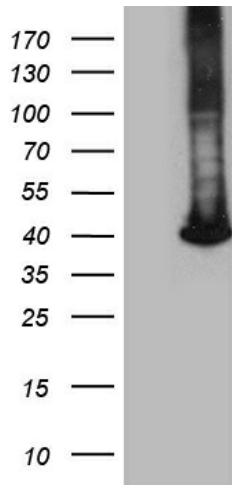


[View online »](#)

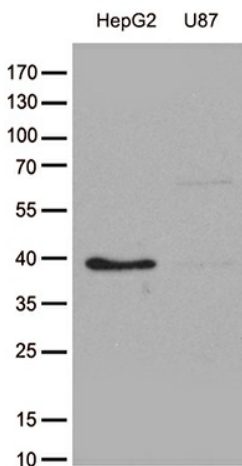
Synonyms: BLOCK25; GALAC4; GLAT; HEL-S-63p; IBD1

Protein Pathways: Glycolysis / Gluconeogenesis

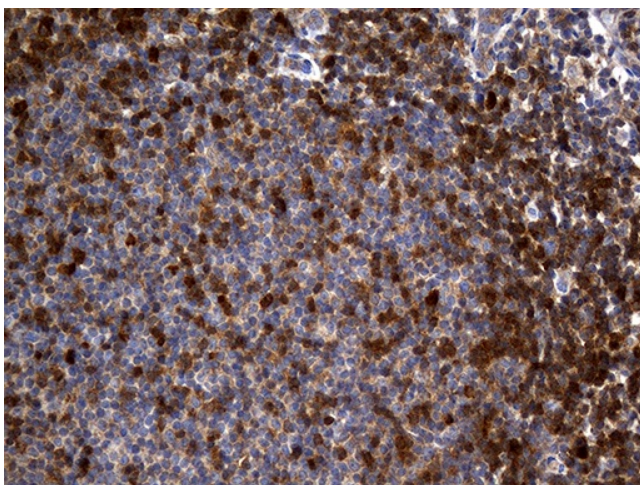
Product images:



HEK293T cells were transfected with the pCMV6-ENTRY control (Left lane) or pCMV6-ENTRY GALM ([RC200995], Right lane) cDNA for 48 hrs and lysed. Equivalent amounts of cell lysates (5 ug per lane) were separated by SDS-PAGE and immunoblotted with anti-GALM. Positive lysates [LY408487] (100ug) and [LC408487] (20ug) can be purchased separately from OriGene.



Western blot analysis of extracts (35ug) from cell lines and/or tissue lysates by using anti-GALM monoclonal antibody (1:500).



Immunohistochemical staining of paraffin-embedded Human tonsil within the normal limits using anti-GALM mouse monoclonal antibody. (Heat-induced epitope retrieval by 1mM EDTA in 10mM Tris buffer (pH8.5) at 120°C for 3min, [TA812300]) (1:2000)