

## Product datasheet for **TA812295S**

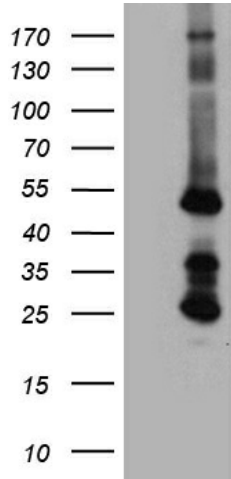
### Genethonin 1 (STBD1) Mouse Monoclonal Antibody [Clone ID: OTI2F1]

#### Product data:

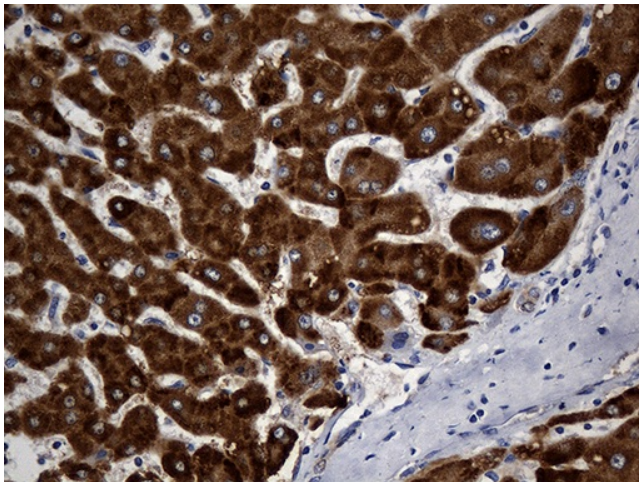
Product Type:	Primary Antibodies
Clone Name:	OTI2F1
Applications:	IHC, WB
Recommended Dilution:	WB 1:2000, IHC 1:2000
Reactivity:	Human
Host:	Mouse
Isotype:	IgG1
Clonality:	Monoclonal
Immunogen:	Human recombinant protein fragment corresponding to amino acids 24-358 of human STBD1 (NP_003934) produced in E.coli.
Formulation:	PBS (pH 7.3) containing 1% BSA, 50% glycerol and 0.02% sodium azide.
Concentration:	1 mg/ml
Purification:	Purified from mouse ascites fluids or tissue culture supernatant by affinity chromatography (protein A/G)
Conjugation:	Unconjugated
Storage:	Store at -20°C as received.
Stability:	Stable for 12 months from date of receipt.
Predicted Protein Size:	38.8 kDa
Gene Name:	starch binding domain 1
Database Link:	<a href="#">NP_003934</a> <a href="#">Entrez Gene 8987 Human</a> <a href="#">O95210</a>
Synonyms:	GENEX3414; GENX-3414
Protein Families:	Transmembrane



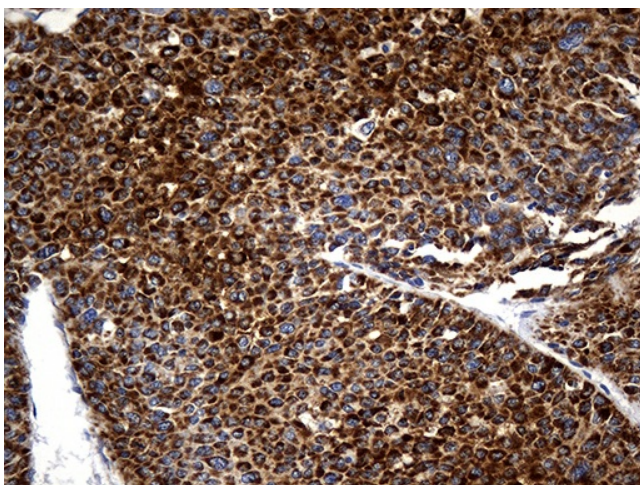
[View online »](#)

**Product images:**

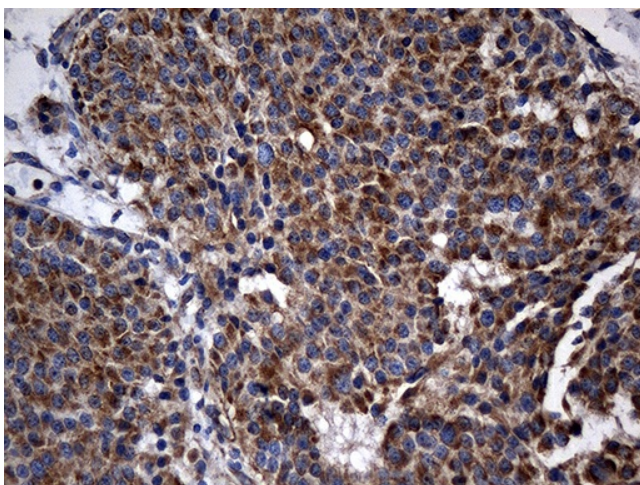
HEK293T cells were transfected with the pCMV6-ENTRY control (Cat# [PS100001], Left lane) or pCMV6-ENTRY STBD1 (Cat# [RC204719], Right lane) cDNA for 48 hrs and lysed. Equivalent amounts of cell lysates (5 ug per lane) were separated by SDS-PAGE and immunoblotted with anti-STBD1 antibody (Cat# [TA812295]). Positive lysates [LY418336] (100ug) and [LC418336] (20ug) can be purchased separately from OriGene.



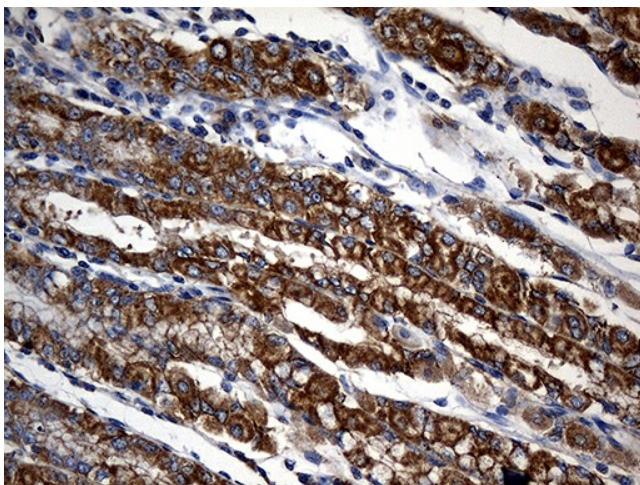
Immunohistochemical staining of paraffin-embedded Human liver tissue within the normal limits using anti-STBD1 mouse monoclonal antibody. (Heat-induced epitope retrieval by 1mM EDTA in 10mM Tris buffer (pH8.5) at 120°C for 3min, [TA812295]) (1:2000)



Immunohistochemical staining of paraffin-embedded Carcinoma of Human liver tissue using anti-STBD1 mouse monoclonal antibody. (Heat-induced epitope retrieval by 1mM EDTA in 10mM Tris buffer (pH8.5) at 120°C for 3min, [TA812295]) (1:2000)



Immunohistochemical staining of paraffin-embedded Carcinoma of Human pancreas tissue using anti-STBD1 mouse monoclonal antibody. (Heat-induced epitope retrieval by 1mM EDTA in 10mM Tris buffer (pH8.5) at 120°C for 3min, [TA812295]) (1:2000)



Immunohistochemical staining of paraffin-embedded Human gastric tissue within the normal limits using anti-STBD1 mouse monoclonal antibody. (Heat-induced epitope retrieval by 1mM EDTA in 10mM Tris buffer (pH8.5) at 120°C for 3min, [TA812295]) (1:2000)