

## Product datasheet for **TA812289AM**

### CINP Mouse Monoclonal Antibody (Biotin conjugated) [Clone ID: OTI5A11]

#### Product data:

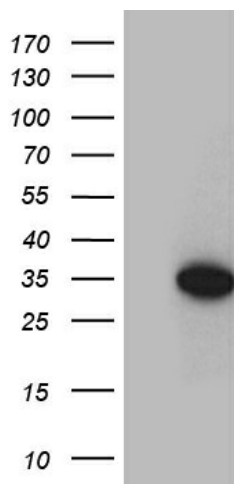
Product Type:	Primary Antibodies
Clone Name:	OTI5A11
Applications:	WB
Recommended Dilution:	WB 1:2000
Reactivity:	Human
Host:	Mouse
Isotype:	IgG1
Clonality:	Monoclonal
Immunogen:	Full length human recombinant protein of human CINP (NP_116019) produced in HEK293T cell.
Formulation:	PBS (pH 7.3) containing 1% BSA, 50% glycerol and 0.02% sodium azide.
Concentration:	0.5 mg/ml
Purification:	Purified from mouse ascites fluids or tissue culture supernatant by affinity chromatography (protein A/G)
Conjugation:	Biotin
Storage:	Store at -20°C as received.
Stability:	Stable for 12 months from date of receipt.
Predicted Protein Size:	24.1 kDa
Gene Name:	cyclin-dependent kinase 2 interacting protein
Database Link:	<a href="#">NP_116019</a> <a href="#">Entrez Gene 51550 Human</a> <a href="#">Q9BW66</a>
Background:	The protein encoded by this gene is reported to be a component of the DNA replication complex as well as a genome-maintenance protein. It may interact with proteins important for replication initiation and has been shown to bind chromatin at the G1 phase of the cell cycle and dissociate from chromatin with replication initiation. It may also serve to regulate checkpoint signaling as part of the DNA damage response. Alternative splicing results in multiple transcript variants. [provided by RefSeq, Feb 2016]



[View online »](#)

Protein Families: Druggable Genome

### Product images:



HEK293T cells were transfected with the pCMV6-ENTRY control (Left lane) or pCMV6-ENTRY CINP ([RC200085], Right lane) cDNA for 48 hrs and lysed. Equivalent amounts of cell lysates (5 ug per lane) were separated by SDS-PAGE and immunoblotted with anti-CINP. Positive lysates [LY403179] (100ug) and [LC403179] (20ug) can be purchased separately from OriGene.