

Product datasheet for **TA812280AM**

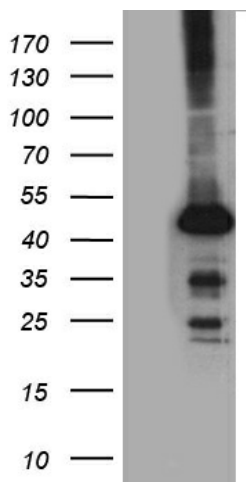
Genethonin 1 (STBD1) Mouse Monoclonal Antibody (Biotin conjugated) [Clone ID: OTI6G5]

Product data:

Product Type:	Primary Antibodies
Clone Name:	OTI6G5
Applications:	WB
Recommended Dilution:	WB 1:2000
Reactivity:	Human
Host:	Mouse
Isotype:	IgG1
Clonality:	Monoclonal
Immunogen:	Human recombinant protein fragment corresponding to amino acids 24-358 of human STBD1 (NP_003934) produced in E.coli.
Formulation:	PBS (pH 7.3) containing 1% BSA, 50% glycerol and 0.02% sodium azide.
Concentration:	0.5 mg/ml
Purification:	Purified from mouse ascites fluids or tissue culture supernatant by affinity chromatography (protein A/G)
Conjugation:	Biotin
Storage:	Store at -20°C as received.
Stability:	Stable for 12 months from date of receipt.
Predicted Protein Size:	38.8 kDa
Gene Name:	starch binding domain 1
Database Link:	NP_003934 Entrez Gene 8987 Human O95210
Synonyms:	GENEX3414; GENX-3414
Protein Families:	Transmembrane



[View online »](#)

Product images:

HEK293T cells were transfected with the pCMV6-ENTRY control (Left lane) or pCMV6-ENTRY STBD1 ([RC204719], Right lane) cDNA for 48 hrs and lysed. Equivalent amounts of cell lysates (5 ug per lane) were separated by SDS-PAGE and immunoblotted with anti-STBD1. Positive lysates [LY418336] (100ug) and [LC418336] (20ug) can be purchased separately from OriGene.