

## Product datasheet for **TA812277AM**

### MAP3K13 Mouse Monoclonal Antibody (Biotin conjugated) [Clone ID: OTI5A2]

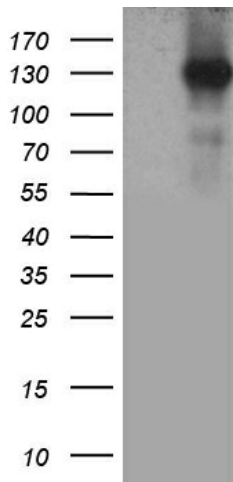
#### Product data:

|                         |   |
|-------------------------|---|
| Product Type:           | Primary Antibodies  |
| Clone Name:             | OTI5A2  |
| Applications:           | WB  |
| Recommended Dilution:   | WB 1:500  |
| Reactivity:             | Human, Mouse, Rat   |
| Host:                   | Mouse   |
| Isotype:                | IgG1  |
| Clonality:              | Monoclonal  |
| Immunogen:              | Human recombinant protein fragment corresponding to amino acids 1-409 of human MAP3K13 (NP_004712) produced in E.coli.  |
| Formulation:            | PBS (pH 7.3) containing 1% BSA, 50% glycerol and 0.02% sodium azide.  |
| Concentration:          | 0.5 mg/ml   |
| Purification:           | Purified from mouse ascites fluids or tissue culture supernatant by affinity chromatography (protein A/G)   |
| Conjugation:            | Biotin  |
| Storage:                | Store at -20°C as received.   |
| Stability:              | Stable for 12 months from date of receipt.  |
| Predicted Protein Size: | 108.1 kDa   |
| Gene Name:              | mitogen-activated protein kinase kinase kinase 13   |
| Database Link:          | <a href="#">NP_004712</a><br><a href="#">Entrez Gene 71751 Mouse</a> <a href="#">Entrez Gene 303823 Rat</a> <a href="#">Entrez Gene 9175 Human</a><br><a href="#">O43283</a>  |
| Background:             | The protein encoded by this gene is a member of serine/threonine protein kinase family. This kinase contains a dual leucine-zipper motif, and has been shown to form dimers/oligomers through its leucine-zipper motif. This kinase can phosphorylate and activate MAPK8/JNK, MAP2K7/MKK7, which suggests a role in the JNK signaling pathway. [provided by RefSeq, Jul 2008] |



[View online »](#)

**Synonyms:** LZK; MEKK13; MLK  
**Protein Families:** Druggable Genome, Protein Kinase, Transcription Factors  
**Protein Pathways:** MAPK signaling pathway

**Product images:**

HEK293T cells were transfected with the pCMV6-ENTRY control (Left lane) or pCMV6-ENTRY MAP3K13 ([RC220337], Right lane) cDNA for 48 hrs and lysed. Equivalent amounts of cell lysates (5 ug per lane) were separated by SDS-PAGE and immunoblotted with anti-MAP3. Positive lysates [LY417791] (100ug) and [LC417791] (20ug) can be purchased separately from OriGene.