

## Product datasheet for **TA812274BM**

### TRIM29 Mouse Monoclonal Antibody (HRP conjugated) [Clone ID: OTI5C11]

#### Product data:

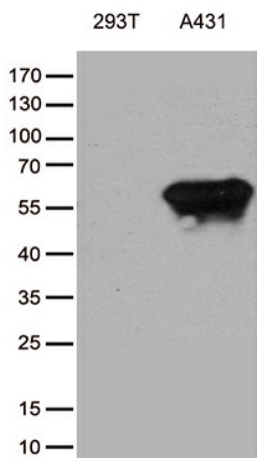
Product Type:	Primary Antibodies
Clone Name:	OTI5C11
Applications:	IHC, WB
Recommended Dilution:	WB 1:500, IHC 1:500
Reactivity:	Human, Mouse, Rat
Host:	Mouse
Isotype:	IgG2b
Clonality:	Monoclonal
Immunogen:	Human recombinant protein fragment corresponding to amino acids 1-352 of human TRIM29 (NP_036233) produced in E.coli.
Formulation:	PBS (pH 7.3) containing 1% BSA, 50% glycerol.
Concentration:	0.5 mg/ml
Purification:	Purified from mouse ascites fluids or tissue culture supernatant by affinity chromatography (protein A/G)
Conjugation:	HRP
Storage:	Store at -20°C as received.
Stability:	Stable for 12 months from date of receipt.
Gene Name:	tripartite motif containing 29
Database Link:	<a href="#">NP_036233</a> <a href="#">Entrez Gene 72169 Mouse</a> <a href="#">Entrez Gene 300656 Rat</a> <a href="#">Entrez Gene 23650 Human Q14134</a>
Background:	The protein encoded by this gene belongs to the TRIM protein family. It has multiple zinc finger motifs and a leucine zipper motif. It has been proposed to form homo- or heterodimers which are involved in nucleic acid binding. Thus, it may act as a transcriptional regulatory factor involved in carcinogenesis and/or differentiation. It may also function in the suppression of radiosensitivity since it is associated with ataxia telangiectasia phenotype. [provided by RefSeq, Jul 2008]
Synonyms:	ATDC



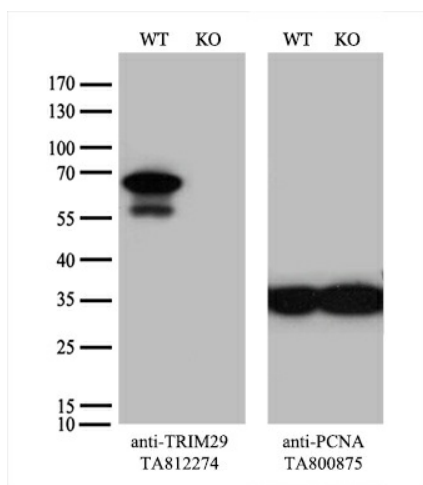
[View online »](#)

Protein Families: Transcription Factors

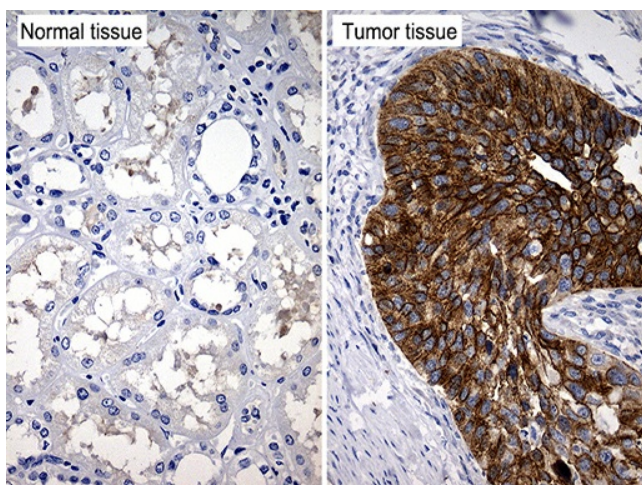
**Product images:**



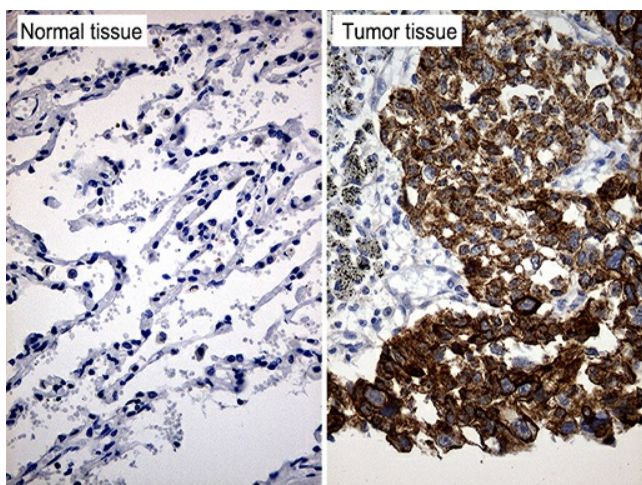
Western blot analysis of extracts (35ug) from cell lines by using anti-TRIM29 monoclonal antibody (1:500).



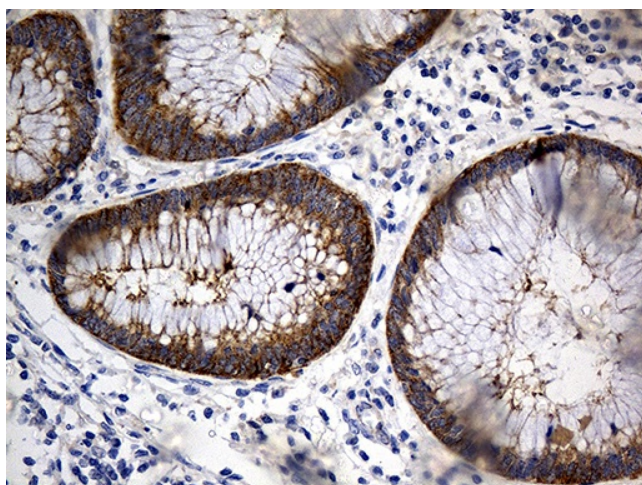
Equivalent amounts of cell lysates (10 ug per lane) of wild-type HeLa cells (WT, Cat# LC810HELA) and TRIM29-Knockout HeLa cells (KO, Cat# [LC831295]) were separated by SDS-PAGE and immunoblotted with anti-TRIM29 monoclonal antibody [TA812274] (1:500). Then the blotted membrane was stripped and reprobed with anti-PCNA antibody as a loading control.



Immunohistochemical staining of paraffin-embedded Carcinoma of Human kidney tissue using anti-TRIM29 mouse monoclonal antibody. (Heat-induced epitope retrieval by 1mM EDTA in 10mM Tris buffer (pH8.5) at 120°C for 3min, [TA812274]) (1:500)



Immunohistochemical staining of paraffin-embedded Carcinoma of Human lung tissue using anti-TRIM29 mouse monoclonal antibody. (Heat-induced epitope retrieval by 1mM EDTA in 10mM Tris buffer (pH8.5) at 120°C for 3min, [TA812274]) (1:500)



Immunohistochemical staining of paraffin-embedded Human appendix tissue within the normal limits using anti-TRIM29 mouse monoclonal antibody. (Heat-induced epitope retrieval by 1mM EDTA in 10mM Tris buffer (pH8.5) at 120°C for 3min, [TA812274]) (1:500)