

## Product datasheet for TA812270M

### CD244 Mouse Monoclonal Antibody [Clone ID: OTI1B12]

#### Product data:

Product Type:	Primary Antibodies
Clone Name:	OTI1B12
Applications:	WB
Recommended Dilution:	WB 1:500
Reactivity:	Human
Host:	Mouse
Isotype:	IgG1
Clonality:	Monoclonal
Immunogen:	Full length human recombinant protein of human CD244 (NP_057466) produced in HEK293T cell.
Formulation:	PBS (pH 7.3) containing 1% BSA, 50% glycerol and 0.02% sodium azide.
Concentration:	1 mg/ml
Purification:	Purified from mouse ascites fluids or tissue culture supernatant by affinity chromatography (protein A/G)
Conjugation:	Unconjugated
Storage:	Store at -20°C as received.
Stability:	Stable for 12 months from date of receipt.
Predicted Protein Size:	41.08 kDa
Gene Name:	CD244 molecule
Database Link:	<a href="#">NP_057466</a> <a href="#">Entrez Gene 51744 Human</a> <a href="#">Q9BZW8</a>
Background:	This gene encodes a cell surface receptor expressed on natural killer (NK) cells (and some T cells) that mediate non-major histocompatibility complex (MHC) restricted killing. The interaction between NK-cell and target cells via this receptor is thought to modulate NK-cell cytolytic activity. Alternatively spliced transcript variants encoding different isoforms have been found for this gene. [provided by RefSeq, Oct 2009]

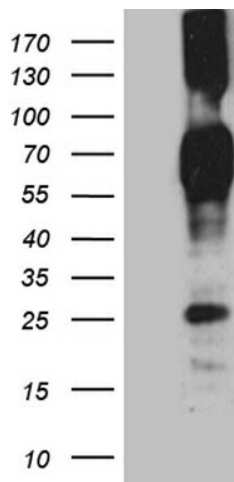

[View online »](#)

**Synonyms:** 2B4; NAIL; NKR2B4; Nmrk; SLAMF4

**Protein Families:** Druggable Genome, ES Cell Differentiation/IPS, Transmembrane

**Protein Pathways:** Natural killer cell mediated cytotoxicity

**Product images:**



HEK293T cells were transfected with the pCMV6-ENTRY control (Left lane) or pCMV6-ENTRY CD244 ([RC206988], Right lane) cDNA for 48 hrs and lysed. Equivalent amounts of cell lysates (5 ug per lane) were separated by SDS-PAGE and immunoblotted with anti-CD244. Positive lysates [LY413990] (100ug) and [LC413990] (20ug) can be purchased separately from OriGene.