

Product datasheet for **TA812264AM**

IL2 Receptor beta (IL2RB) Mouse Monoclonal Antibody (Biotin conjugated) [Clone ID: OTI5A5]

Product data:

| | |
|-------------------------|--|
| Product Type: | Primary Antibodies |
| Clone Name: | OTI5A5 |
| Applications: | WB |
| Recommended Dilution: | WB 1:500 |
| Reactivity: | Human |
| Host: | Mouse |
| Isotype: | IgG1 |
| Clonality: | Monoclonal |
| Immunogen: | Human recombinant protein fragment corresponding to amino acids 27-240+Mouse FC of human IL2RB (NP_000869) produced in HEK293T cell. |
| Formulation: | PBS (pH 7.3) containing 1% BSA, 50% glycerol and 0.02% sodium azide. |
| Concentration: | 0.5 mg/ml |
| Purification: | Purified from mouse ascites fluids or tissue culture supernatant by affinity chromatography (protein A/G) |
| Conjugation: | Biotin |
| Storage: | Store at -20°C as received. |
| Stability: | Stable for 12 months from date of receipt. |
| Predicted Protein Size: | 61.12 kDa |
| Gene Name: | interleukin 2 receptor subunit beta |
| Database Link: | NP_000869 Entrez Gene 3560 Human P14784 |



[View online »](#)

Background:

The interleukin 2 receptor, which is involved in T cell-mediated immune responses, is present in 3 forms with respect to ability to bind interleukin 2. The low affinity form is a monomer of the alpha subunit and is not involved in signal transduction. The intermediate affinity form consists of an alpha/beta subunit heterodimer, while the high affinity form consists of an alpha/beta/gamma subunit heterotrimer. Both the intermediate and high affinity forms of the receptor are involved in receptor-mediated endocytosis and transduction of mitogenic signals from interleukin 2. The protein encoded by this gene represents the beta subunit and is a type I membrane protein. [provided by RefSeq, Jul 2008]

Synonyms:

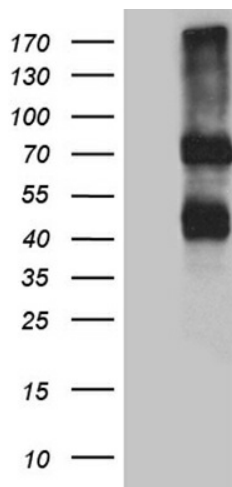
CD122; IL15RB; P70-75

Protein Families:

Druggable Genome, Transmembrane

Protein Pathways:

Cytokine-cytokine receptor interaction, Endocytosis, Jak-STAT signaling pathway

Product images:

HEK293T cells were transfected with the pCMV6-ENTRY control (Cat# [PS100001], Left lane) or pCMV6-ENTRY IL2RB (Cat# [RC206591], Right lane) cDNA for 48 hrs and lysed. Equivalent amounts of cell lysates (5 ug per lane) were separated by SDS-PAGE and immunoblotted with anti-IL2RB antibody (Cat# [TA812264]). Positive lysates [LY400313] (100ug) and [LC400313] (20ug) can be purchased separately from OriGene.