

## Product datasheet for **TA812258BM**

### IL2 Receptor beta (IL2RB) Mouse Monoclonal Antibody (HRP conjugated) [Clone ID: OTI1D12]

#### Product data:

Product Type:	Primary Antibodies
Clone Name:	OTI1D12
Applications:	WB
Recommended Dilution:	WB 1:500
Reactivity:	Human
Host:	Mouse
Isotype:	IgG1
Clonality:	Monoclonal
Immunogen:	Human recombinant protein fragment corresponding to amino acids 27-240+Mouse FC of human IL2RB (NP_000869) produced in HEK293T cell.
Formulation:	PBS (pH 7.3) containing 1% BSA, 50% glycerol.
Concentration:	0.5 mg/ml
Purification:	Purified from mouse ascites fluids or tissue culture supernatant by affinity chromatography (protein A/G)
Conjugation:	HRP
Storage:	Store at -20°C as received.
Stability:	Stable for 12 months from date of receipt.
Predicted Protein Size:	61.12 kDa
Gene Name:	interleukin 2 receptor subunit beta
Database Link:	<a href="#">NP_000869</a> <a href="#">Entrez Gene 3560 Human</a> <a href="#">P14784</a>



[View online »](#)

**Background:**

The interleukin 2 receptor, which is involved in T cell-mediated immune responses, is present in 3 forms with respect to ability to bind interleukin 2. The low affinity form is a monomer of the alpha subunit and is not involved in signal transduction. The intermediate affinity form consists of an alpha/beta subunit heterodimer, while the high affinity form consists of an alpha/beta/gamma subunit heterotrimer. Both the intermediate and high affinity forms of the receptor are involved in receptor-mediated endocytosis and transduction of mitogenic signals from interleukin 2. The protein encoded by this gene represents the beta subunit and is a type I membrane protein. [provided by RefSeq, Jul 2008]

**Synonyms:**

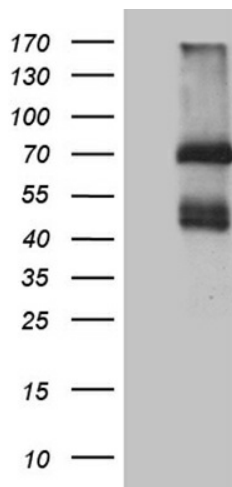
CD122; IL15RB; P70-75

**Protein Families:**

Druggable Genome, Transmembrane

**Protein Pathways:**

Cytokine-cytokine receptor interaction, Endocytosis, Jak-STAT signaling pathway

**Product images:**

HEK293T cells were transfected with the pCMV6-ENTRY control (Left lane) or pCMV6-ENTRY IL2RB ([RC206591], Right lane) cDNA for 48 hrs and lysed. Equivalent amounts of cell lysates (5 ug per lane) were separated by SDS-PAGE and immunoblotted with anti-IL2RB. Positive lysates [LY400313] (100ug) and [LC400313] (20ug) can be purchased separately from OriGene.