

## Product datasheet for **TA812257AM**

### **GI24 (C10orf54) Mouse Monoclonal Antibody (Biotin conjugated) [Clone ID: OTI7A6D5]**

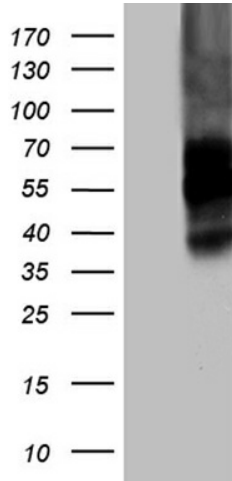
#### **Product data:**

|                                |   |
|--------------------------------|---|
| <b>Product Type:</b>           | Primary Antibodies  |
| <b>Clone Name:</b>             | OTI7A6D5  |
| <b>Applications:</b>           | FC, WB  |
| <b>Recommended Dilution:</b>   | WB 1:500, FLOW 1:100  |
| <b>Reactivity:</b>             | Human   |
| <b>Host:</b>                   | Mouse   |
| <b>Isotype:</b>                | IgG1  |
| <b>Clonality:</b>              | Monoclonal  |
| <b>Immunogen:</b>              | Full length human recombinant protein of human C10ORF54 (NP_071436) produced in HEK293T cell.             |
| <b>Formulation:</b>            | PBS (pH 7.3) containing 1% BSA, 50% glycerol and 0.02% sodium azide.                                      |
| <b>Concentration:</b>          | 0.5 mg/ml   |
| <b>Purification:</b>           | Purified from mouse ascites fluids or tissue culture supernatant by affinity chromatography (protein A/G) |
| <b>Conjugation:</b>            | Biotin  |
| <b>Storage:</b>                | Store at -20°C as received.   |
| <b>Stability:</b>              | Stable for 12 months from date of receipt.  |
| <b>Predicted Protein Size:</b> | 33.7 kDa  |
| <b>Gene Name:</b>              | chromosome 10 open reading frame 54   |
| <b>Database Link:</b>          | <a href="#">NP_071436</a><br><a href="#">Entrez Gene 64115 Human</a><br><a href="#">Q9H7M9</a>            |
| <b>Synonyms:</b>               | B7-H5; B7H5; GI24; PP2135; SISP1  |
| <b>Protein Families:</b>       | Transmembrane   |

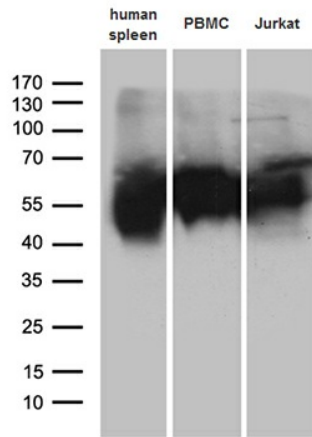


[View online »](#)

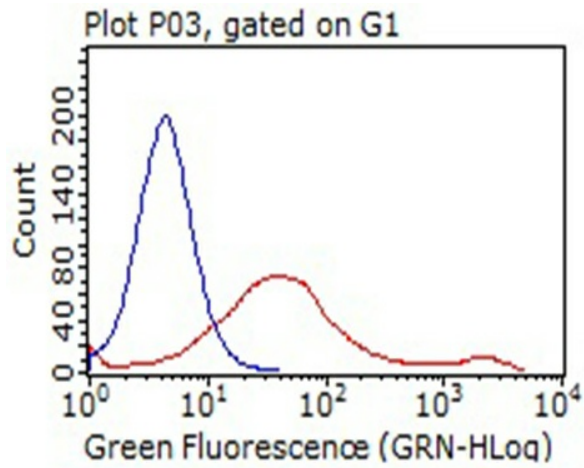
**Product images:**



HEK293T cells were transfected with the pCMV6-ENTRY control (Cat# [PS100001], Left lane) or pCMV6-ENTRY C10orf54 (Cat# [RC204547], Right lane) cDNA for 48 hrs and lysed. Equivalent amounts of cell lysates (5 ug per lane) were separated by SDS-PAGE and immunoblotted with anti-C10orf54 antibody (Cat# [TA812257]). Positive lysates [LY411741] (100ug) and [LC411741] (20ug) can be purchased separately from OriGene.



Western blot analysis of extracts (35ug) from 3 cell lines and human spleen tissue lysate by using anti-C10orf54 monoclonal antibody (1:500).



HEK293T cells transfected with either [RC204547] overexpress plasmid (Red) or empty vector control plasmid (Blue) were immunostained by anti-C10orf54 antibody ([TA812257]), and then analyzed by flow cytometry (1:100).