

Product datasheet for **TA812247BM**

PIN1 Mouse Monoclonal Antibody (HRP conjugated) [Clone ID: OTI4H1]

Product data:

Product Type:	Primary Antibodies
Clone Name:	OTI4H1
Applications:	WB
Recommended Dilution:	WB 1:500
Reactivity:	Human, Rat, Mouse
Host:	Mouse
Isotype:	IgG1
Clonality:	Monoclonal
Immunogen:	Full length human recombinant protein of human PIN1 (NP_006212) produced in E.coli.
Formulation:	PBS (pH 7.3) containing 1% BSA, 50% glycerol.
Concentration:	0.5 mg/ml
Purification:	Purified from mouse ascites fluids or tissue culture supernatant by affinity chromatography (protein A/G)
Conjugation:	HRP
Storage:	Store at -20°C as received.
Stability:	Stable for 12 months from date of receipt.
Predicted Protein Size:	18.1 kDa
Gene Name:	peptidylprolyl cis/trans isomerase, NIMA-interacting 1
Database Link:	NP_006212 Entrez Gene 23988 Mouse Entrez Gene 298696 Rat Entrez Gene 5300 Human Q13526



[View online »](#)

Background:

Peptidyl-prolyl cis/trans isomerases (PPIases) catalyze the cis/trans isomerization of peptidyl-prolyl peptide bonds. This gene encodes one of the PPIases, which specifically binds to phosphorylated ser/thr-pro motifs to catalytically regulate the post-phosphorylation conformation of its substrates. The conformational regulation catalyzed by this PPIase has a profound impact on key proteins involved in the regulation of cell growth, genotoxic and other stress responses, the immune response, induction and maintenance of pluripotency, germ cell development, neuronal differentiation, and survival. This enzyme also plays a key role in the pathogenesis of Alzheimer's disease and many cancers. Multiple alternatively spliced transcript variants have been found for this gene. [provided by RefSeq, Jun 2011]

Synonyms:

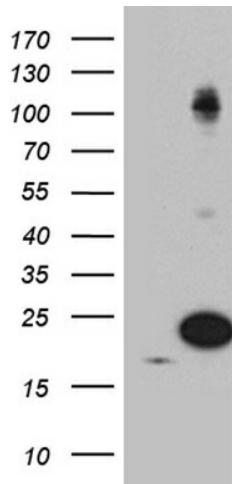
DOD; UBL5

Protein Families:

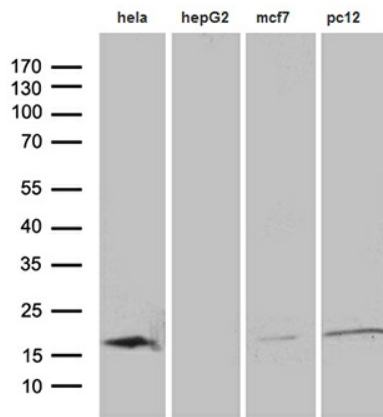
Druggable Genome

Protein Pathways:

RIG-I-like receptor signaling pathway

Product images:


HEK293T cells were transfected with the pCMV6-ENTRY control (Cat# [PS100001], Left lane) or pCMV6-ENTRY PIN1 (Cat# [RC202543], Right lane) cDNA for 48 hrs and lysed. Equivalent amounts of cell lysates (5 ug per lane) were separated by SDS-PAGE and immunoblotted with anti-PIN1 antibody (Cat# [TA812247]). Positive lysates [LY401873] (100ug) and [LC401873] (20ug) can be purchased separately from OriGene.



Western blot analysis of extracts (35ug) from 4 cell lines by using anti-PIN1 monoclonal antibody (1:500).