

## Product datasheet for **TA812241S**

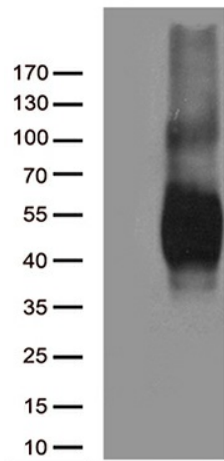
### **B7-1 (CD80) Mouse Monoclonal Antibody [Clone ID: OTI5B5]**

#### **Product data:**

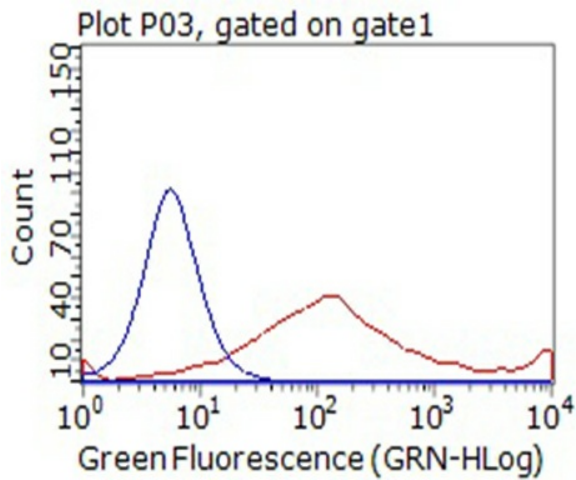
<b>Product Type:</b>	Primary Antibodies
<b>Clone Name:</b>	OTI5B5
<b>Applications:</b>	FC, WB
<b>Recommended Dilution:</b>	WB 1:500, FLOW 1:100
<b>Reactivity:</b>	Human
<b>Host:</b>	Mouse
<b>Isotype:</b>	IgG2b
<b>Clonality:</b>	Monoclonal
<b>Immunogen:</b>	Full length human recombinant protein of human CD80 (NP_005182) produced in HEK293T cell.
<b>Formulation:</b>	PBS (pH 7.3) containing 1% BSA, 50% glycerol and 0.02% sodium azide.
<b>Concentration:</b>	1 mg/ml
<b>Purification:</b>	Purified from mouse ascites fluids or tissue culture supernatant by affinity chromatography (protein A/G)
<b>Conjugation:</b>	Unconjugated
<b>Storage:</b>	Store at -20°C as received.
<b>Stability:</b>	Stable for 12 months from date of receipt.
<b>Gene Name:</b>	CD80 molecule
<b>Database Link:</b>	<a href="#">NP_005182</a> <a href="#">Entrez Gene 941 Human</a> <a href="#">P33681</a>
<b>Synonyms:</b>	B7; B7-1; B7.1; BB1; CD28LG; CD28LG1; LAB7
<b>Protein Families:</b>	Druggable Genome, Transcription Factors, Transmembrane
<b>Protein Pathways:</b>	Allograft rejection, Autoimmune thyroid disease, Cell adhesion molecules (CAMs), Graft-versus-host disease, Systemic lupus erythematosus, Toll-like receptor signaling pathway, Type I diabetes mellitus, Viral myocarditis



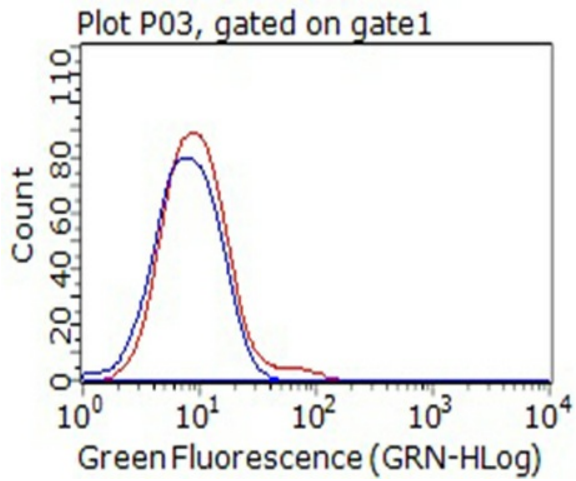
[View online »](#)

**Product images:**


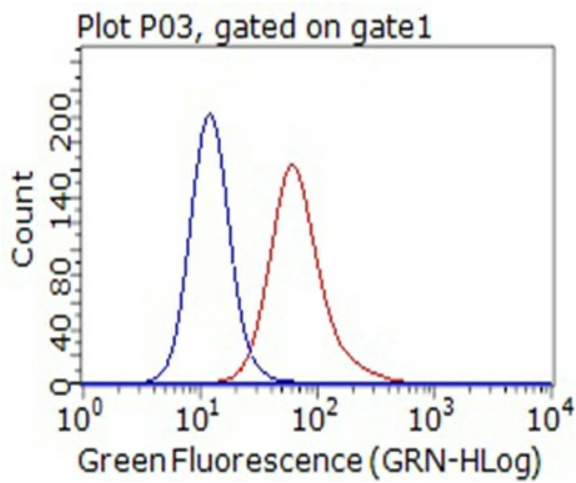
HEK293T cells were transfected with the pCMV6-ENTRY control (Left lane) or pCMV6-ENTRY CD80 ([RC206540], Right lane) cDNA for 48 hrs and lysed. Equivalent amounts of cell lysates (5 ug per lane) were separated by SDS-PAGE and immunoblotted with anti-CD80 (1:500).



HEK293T cells transfected with either [RC206540] overexpress plasmid (Right) or IgG isotype control (Left) were immunostained by anti-CD80 antibody ([TA812241]), and then analyzed by flow cytometry (1:100).



Flow cytometric Analysis of living Jurkat cells, using anti-CD80 antibody ([TA812241]), (Red), compared to an IgG isotype control, (Blue) (1:100).



Flow cytometric Analysis of living Raji cells, using anti-CD80 antibody ([TA812241]), (Red), compared to an IgG isotype control, (Blue) (1:100).