

Product datasheet for **TA812241AM**

B7-1 (CD80) Mouse Monoclonal Antibody (Biotin conjugated) [Clone ID: OTI5B5]

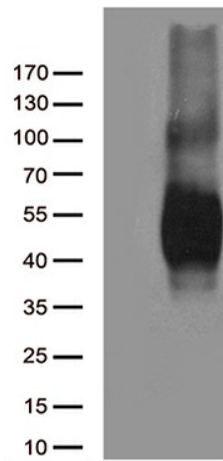
Product data:

Product Type:	Primary Antibodies
Clone Name:	OTI5B5
Applications:	FC, WB
Recommended Dilution:	WB 1:500, FLOW 1:100
Reactivity:	Human
Host:	Mouse
Isotype:	IgG2b
Clonality:	Monoclonal
Immunogen:	Full length human recombinant protein of human CD80 (NP_005182) produced in HEK293T cell.
Formulation:	PBS (pH 7.3) containing 1% BSA, 50% glycerol and 0.02% sodium azide.
Concentration:	0.5 mg/ml
Purification:	Purified from mouse ascites fluids or tissue culture supernatant by affinity chromatography (protein A/G)
Conjugation:	Biotin
Storage:	Store at -20°C as received.
Stability:	Stable for 12 months from date of receipt.
Gene Name:	CD80 molecule
Database Link:	NP_005182 Entrez Gene 941 Human P33681
Synonyms:	B7; B7-1; B7.1; BB1; CD28LG; CD28LG1; LAB7
Protein Families:	Druggable Genome, Transcription Factors, Transmembrane
Protein Pathways:	Allograft rejection, Autoimmune thyroid disease, Cell adhesion molecules (CAMs), Graft-versus-host disease, Systemic lupus erythematosus, Toll-like receptor signaling pathway, Type I diabetes mellitus, Viral myocarditis

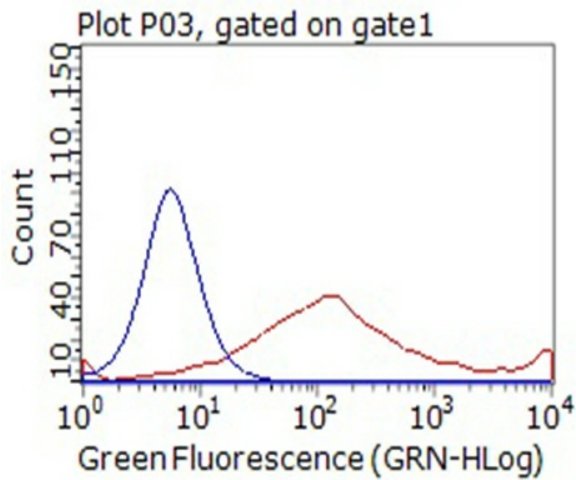


[View online »](#)

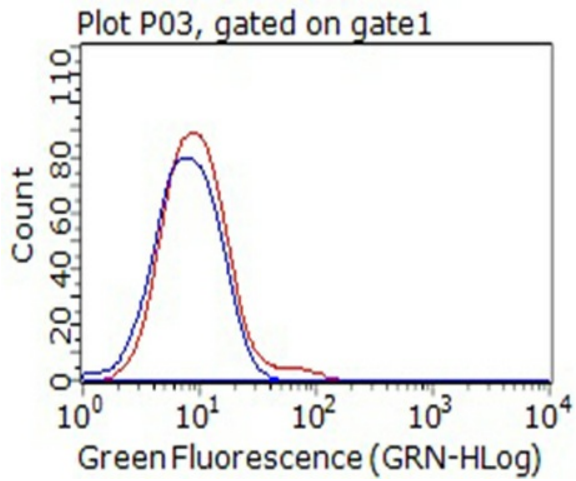
Product images:



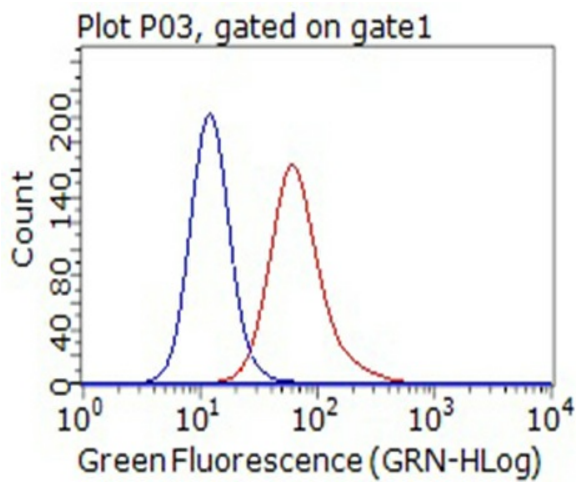
HEK293T cells were transfected with the pCMV6-ENTRY control (Left lane) or pCMV6-ENTRY CD80 ([RC206540], Right lane) cDNA for 48 hrs and lysed. Equivalent amounts of cell lysates (5 ug per lane) were separated by SDS-PAGE and immunoblotted with anti-CD80 (1:500).



HEK293T cells transfected with either [RC206540] overexpress plasmid (Right) or IgG isotype control (Left) were immunostained by anti-CD80 antibody ([TA812241]), and then analyzed by flow cytometry (1:100).



Flow cytometric Analysis of living Jurkat cells, using anti-CD80 antibody ([TA812241]), (Red), compared to an IgG isotype control, (Blue) (1:100).



Flow cytometric Analysis of living Raji cells, using anti-CD80 antibody ([TA812241]), (Red), compared to an IgG isotype control, (Blue) (1:100).