

Product datasheet for **TA812229BM**

IL15RA Mouse Monoclonal Antibody (HRP conjugated) [Clone ID: OTI3D5]

Product data:

Product Type:	Primary Antibodies
Clone Name:	OTI3D5
Applications:	FC, WB
Recommended Dilution:	WB 1:500, FLOW 1:25
Reactivity:	Human
Host:	Mouse
Isotype:	IgG2b
Clonality:	Monoclonal
Immunogen:	Human recombinant protein fragment corresponding to amino acids 31-267 of human IL15RA (NP_001230468) produced in E.coli.
Formulation:	PBS (pH 7.3) containing 1% BSA, 50% glycerol.
Concentration:	0.5 mg/ml
Purification:	Purified from mouse ascites fluids or tissue culture supernatant by affinity chromatography (protein A/G)
Conjugation:	HRP
Storage:	Store at -20°C as received.
Stability:	Stable for 12 months from date of receipt.
Predicted Protein Size:	28.22 kDa
Gene Name:	interleukin 15 receptor subunit alpha
Database Link:	NP_001230468 Entrez Gene 3601 Human Q13261



[View online »](#)

Background:

This gene encodes a cytokine receptor that specifically binds interleukin 15 (IL15) with high affinity. The receptors of IL15 and IL2 share two subunits, IL2R beta and IL2R gamma. This forms the basis of many overlapping biological activities of IL15 and IL2. The protein encoded by this gene is structurally related to IL2R alpha, an additional IL2-specific alpha subunit necessary for high affinity IL2 binding. Unlike IL2RA, IL15RA is capable of binding IL15 with high affinity independent of other subunits, which suggests distinct roles between IL15 and IL2. This receptor is reported to enhance cell proliferation and expression of apoptosis inhibitor BCL2L1/BCL2-XL and BCL2. Multiple alternatively spliced transcript variants of this gene have been reported. [provided by RefSeq, Apr 2010]

Synonyms:

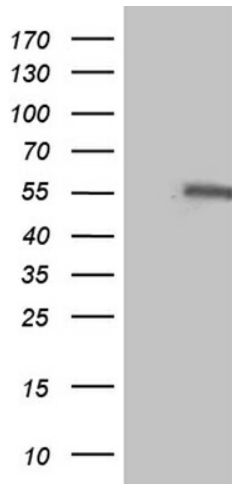
CD215

Protein Families:

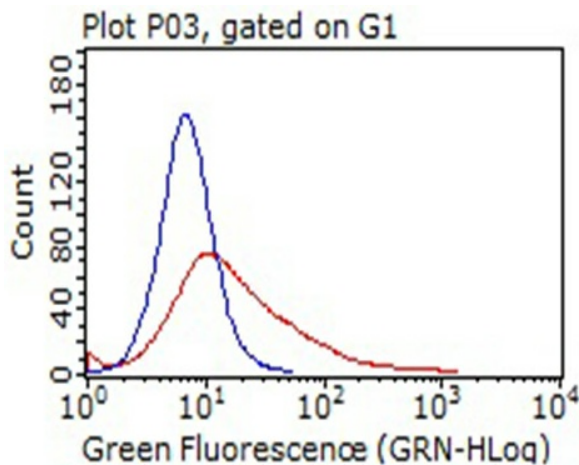
Druggable Genome, Secreted Protein

Protein Pathways:

Cytokine-cytokine receptor interaction, Jak-STAT signaling pathway

Product images:


HEK293T cells were transfected with the pCMV6-ENTRY control (Cat# [PS100001], Left lane) or pCMV6-ENTRY IL15RA (Cat# [RC232218], Right lane) cDNA for 48 hrs and lysed. Equivalent amounts of cell lysates (5 ug per lane) were separated by SDS-PAGE and immunoblotted with anti-IL15RA antibody (Cat# [TA812229])(1:500).



HEK293T cells transfected with either [RC232218] overexpress plasmid (Red) or empty vector control plasmid (Blue) were immunostained by anti-IL15RA antibody ([TA812229]), and then analyzed by flow cytometry (1:25).