

Product datasheet for **TA812225AM**

LYVE1 Mouse Monoclonal Antibody (Biotin conjugated) [Clone ID: OTI5H3]

Product data:

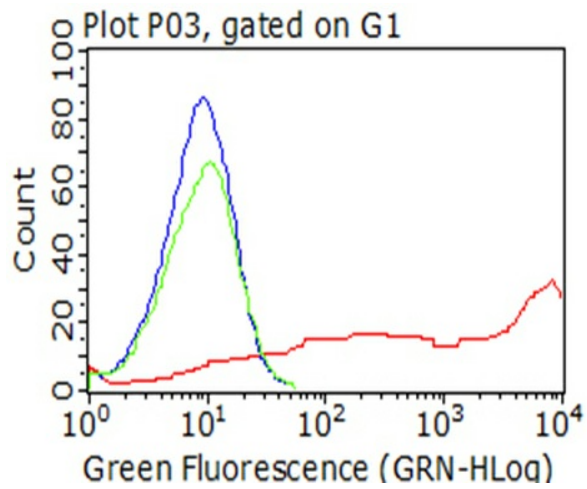
Product Type:	Primary Antibodies
Clone Name:	OTI5H3
Applications:	FC
Recommended Dilution:	FLOW 1:100
Reactivity:	Human
Host:	Mouse
Isotype:	IgG1
Clonality:	Monoclonal
Immunogen:	Human recombinant protein fragment corresponding to amino acids 20-238 of human LYVE1 (NP_006682) produced in HEK293T cell.
Formulation:	PBS (pH 7.3) containing 1% BSA, 50% glycerol and 0.02% sodium azide.
Concentration:	0.5 mg/ml
Purification:	Purified from mouse ascites fluids or tissue culture supernatant by affinity chromatography (protein A/G)
Conjugation:	Biotin
Storage:	Store at -20°C as received.
Stability:	Stable for 12 months from date of receipt.
Predicted Protein Size:	35 kDa
Gene Name:	lymphatic vessel endothelial hyaluronan receptor 1
Database Link:	NP_006682 Entrez Gene 10894 Human Q9Y5Y7
Background:	This gene encodes a type I integral membrane glycoprotein. The encoded protein acts as a receptor and binds to both soluble and immobilized hyaluronan. This protein may function in lymphatic hyaluronan transport and have a role in tumor metastasis. [provided by RefSeq, Jul 2008]
Synonyms:	CRSBP-1; HAR; LYVE-1; XLKD1



[View online »](#)

Protein Families: Druggable Genome, Transmembrane

Product images:



HEK293T cells transfected with either [RC204609] overexpress plasmid (Red) or empty vector control plasmid (Blue) were immunostained by anti-LYVE1 antibody ([TA812225]), and then analyzed by flow cytometry (1:100).