

## Product datasheet for **TA812215BM**

### **BMP6 Mouse Monoclonal Antibody (HRP conjugated) [Clone ID: OTI8B11]**

#### **Product data:**

Product Type:	Primary Antibodies
Clone Name:	OTI8B11
Applications:	WB
Recommended Dilution:	WB 1:2000
Reactivity:	Human, Mouse, Rat
Host:	Mouse
Isotype:	IgG1
Clonality:	Monoclonal
Immunogen:	Human recombinant protein fragment corresponding to amino acids 21-374 of human BMP6 (NP_001709) produced in E.coli.
Formulation:	PBS (pH 7.3) containing 1% BSA, 50% glycerol.
Concentration:	0.5 mg/ml
Purification:	Purified from mouse ascites fluids or tissue culture supernatant by affinity chromatography (protein A/G)
Conjugation:	HRP
Storage:	Store at -20°C as received.
Stability:	Stable for 12 months from date of receipt.
Predicted Protein Size:	57 kDa
Gene Name:	bone morphogenetic protein 6
Database Link:	<a href="#">NP_001709</a> <a href="#">Entrez Gene 12161 Mouse</a> <a href="#">Entrez Gene 25644 Rat</a> <a href="#">Entrez Gene 654 Human</a> <a href="#">P22004</a>



[View online »](#)

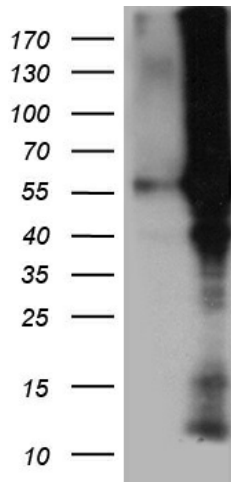
**Background:** The bone morphogenetic proteins (BMPs) are a family of secreted signaling molecules that can induce ectopic bone growth. Many BMPs are part of the transforming growth factor-beta (TGFB) superfamily. BMPs were originally identified by an ability of demineralized bone extract to induce endochondral osteogenesis in vivo in an extraskkeletal site. Based on its expression early in embryogenesis, the BMP encoded by this gene has a proposed role in early development. In addition, the fact that this BMP is closely related to BMP5 and BMP7 has lead to speculation of possible bone inductive activity. [provided by RefSeq, Jul 2008]

**Synonyms:** VGR; VGR1

**Protein Families:** Adult stem cells, Cancer stem cells, Druggable Genome, Embryonic stem cells, ES Cell Differentiation/IPS, Induced pluripotent stem cells, Secreted Protein, Stem cell relevant signaling - TGFb/BMP signaling pathway

**Protein Pathways:** Hedgehog signaling pathway, TGF-beta signaling pathway

### Product images:



HEK293T cells were transfected with the pCMV6-ENTRY control (Left lane) or pCMV6-ENTRY BMP6 ([RC212307], Right lane) cDNA for 48 hrs and lysed. Equivalent amounts of cell lysates (5 ug per lane) were separated by SDS-PAGE and immunoblotted with anti-BMP6. Positive lysates [LY400646] (100ug) and [LC400646] (20ug) can be purchased separately from OriGene.