

Product datasheet for **TA812211S**

Angiotensin Converting Enzyme 1 (ACE) Mouse Monoclonal Antibody [Clone ID: OTI2C8]

Product data:

Product Type:	Primary Antibodies
Clone Name:	OTI2C8
Applications:	IHC, WB
Recommended Dilution:	WB 1:500~2000, IHC 1:500
Reactivity:	Human
Host:	Mouse
Isotype:	IgG1
Clonality:	Monoclonal
Immunogen:	Human recombinant protein fragment corresponding to amino acids 642-1230 of human ACE (NP_000780) produced in E.coli.
Formulation:	PBS (pH 7.3) containing 1% BSA, 50% glycerol and 0.02% sodium azide.
Concentration:	1 mg/ml
Purification:	Purified from mouse ascites fluids or tissue culture supernatant by affinity chromatography (protein A/G)
Conjugation:	Unconjugated
Storage:	Store at -20°C as received.
Stability:	Stable for 12 months from date of receipt.
Gene Name:	angiotensin I converting enzyme
Database Link:	NP_000780 Entrez Gene 1636 Human P12821



[View online »](#)

Background:

This gene encodes an enzyme involved in catalyzing the conversion of angiotensin I into a physiologically active peptide angiotensin II. Angiotensin II is a potent vasopressor and aldosterone-stimulating peptide that controls blood pressure and fluid-electrolyte balance. This enzyme plays a key role in the renin-angiotensin system. Many studies have associated the presence or absence of a 287 bp Alu repeat element in this gene with the levels of circulating enzyme or cardiovascular pathophysiology. Multiple alternatively spliced transcript variants encoding different isoforms have been identified, and two most abundant spliced variants encode the somatic form and the testicular form, respectively, that are equally active. [provided by RefSeq, May 2010]

Synonyms:

ACE1; CD143; DCP; DCP1

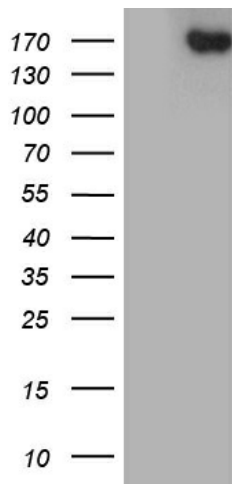
Protein Families:

Druggable Genome, ES Cell Differentiation/IPS, Protease, Secreted Protein, Transmembrane

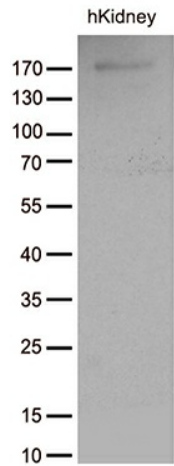
Protein Pathways:

Hypertrophic cardiomyopathy (HCM), Renin-angiotensin system

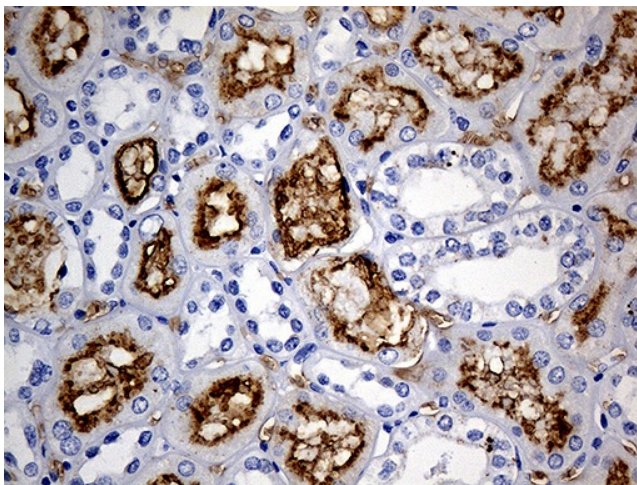
Product images:



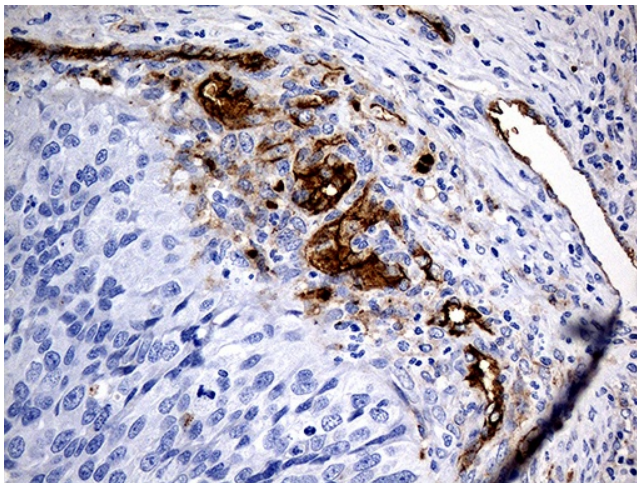
HEK293T cells were transfected with the pCMV6-ENTRY control (Cat# [PS100001], Left lane) or pCMV6-ENTRY ACE (Cat# [RC223702], Right lane) cDNA for 48 hrs and lysed. Equivalent amounts of cell lysates (5 ug per lane) were separated by SDS-PAGE and immunoblotted with anti-ACE (Cat# [TA812211])(1:2000).



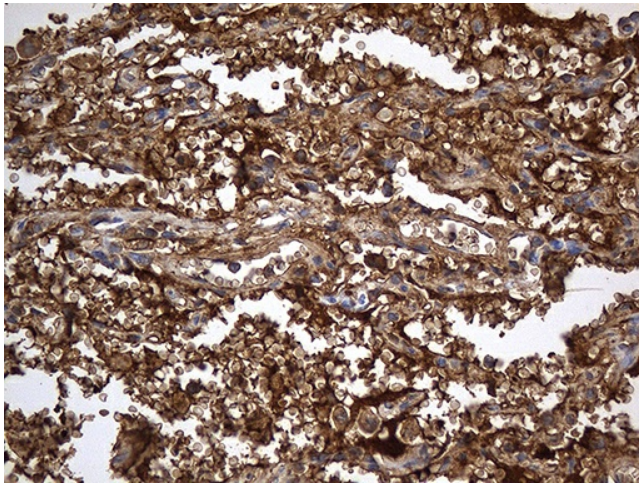
Western blot analysis of extracts (35ug) from tissue lysate by using anti-ACE monoclonal antibody (1:500).



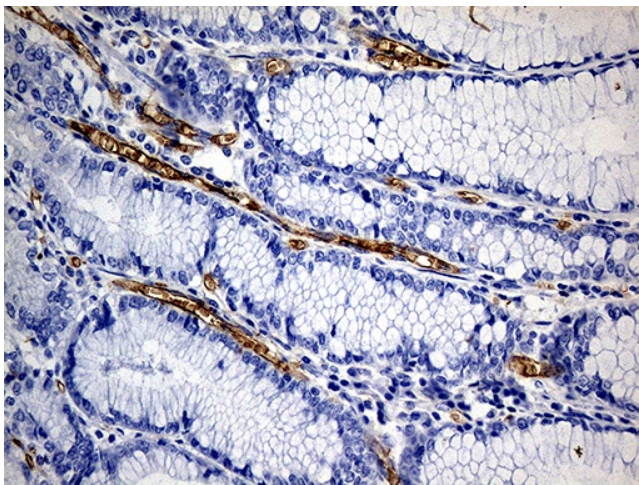
Immunohistochemical staining of paraffin-embedded Human Kidney tissue within the normal limits using anti-ACE mouse monoclonal antibody. (Heat-induced epitope retrieval by 1mM EDTA in 10mM Tris buffer (pH8.5) at 120°C for 3min, [TA812211]) (1:500)



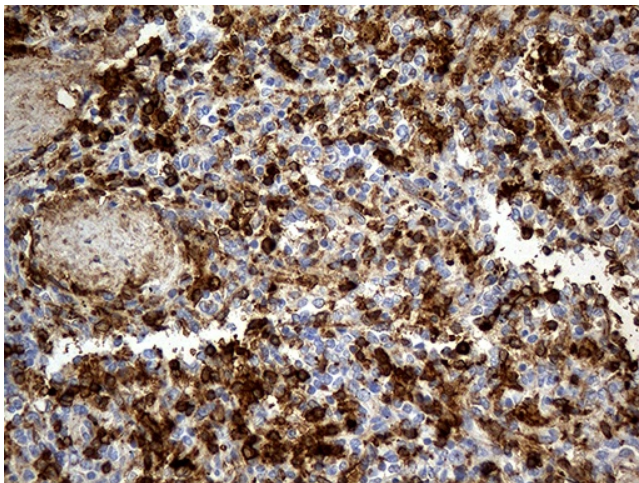
Immunohistochemical staining of paraffin-embedded Carcinoma of Human kidney tissue using anti-ACE mouse monoclonal antibody. (Heat-induced epitope retrieval by 1mM EDTA in 10mM Tris buffer (pH8.5) at 120°C for 3min, [TA812211]) (1:500)



Immunohistochemical staining of paraffin-embedded Human lung tissue within the normal limits using anti-ACE mouse monoclonal antibody. (Heat-induced epitope retrieval by 1mM EDTA in 10mM Tris buffer (pH8.5) at 120°C for 3min, [TA812211]) (1:500)



Immunohistochemical staining of paraffin-embedded Human gastric tissue within the normal limits using anti-ACE mouse monoclonal antibody. (Heat-induced epitope retrieval by 1mM EDTA in 10mM Tris buffer (pH8.5) at 120°C for 3min, [TA812211]) (1:500)



Immunohistochemical staining of paraffin-embedded Human spleen tissue within the normal limits using anti-ACE mouse monoclonal antibody. (Heat-induced epitope retrieval by 1mM EDTA in 10mM Tris buffer (pH8.5) at 120°C for 3min, [TA812211]) (1:500)